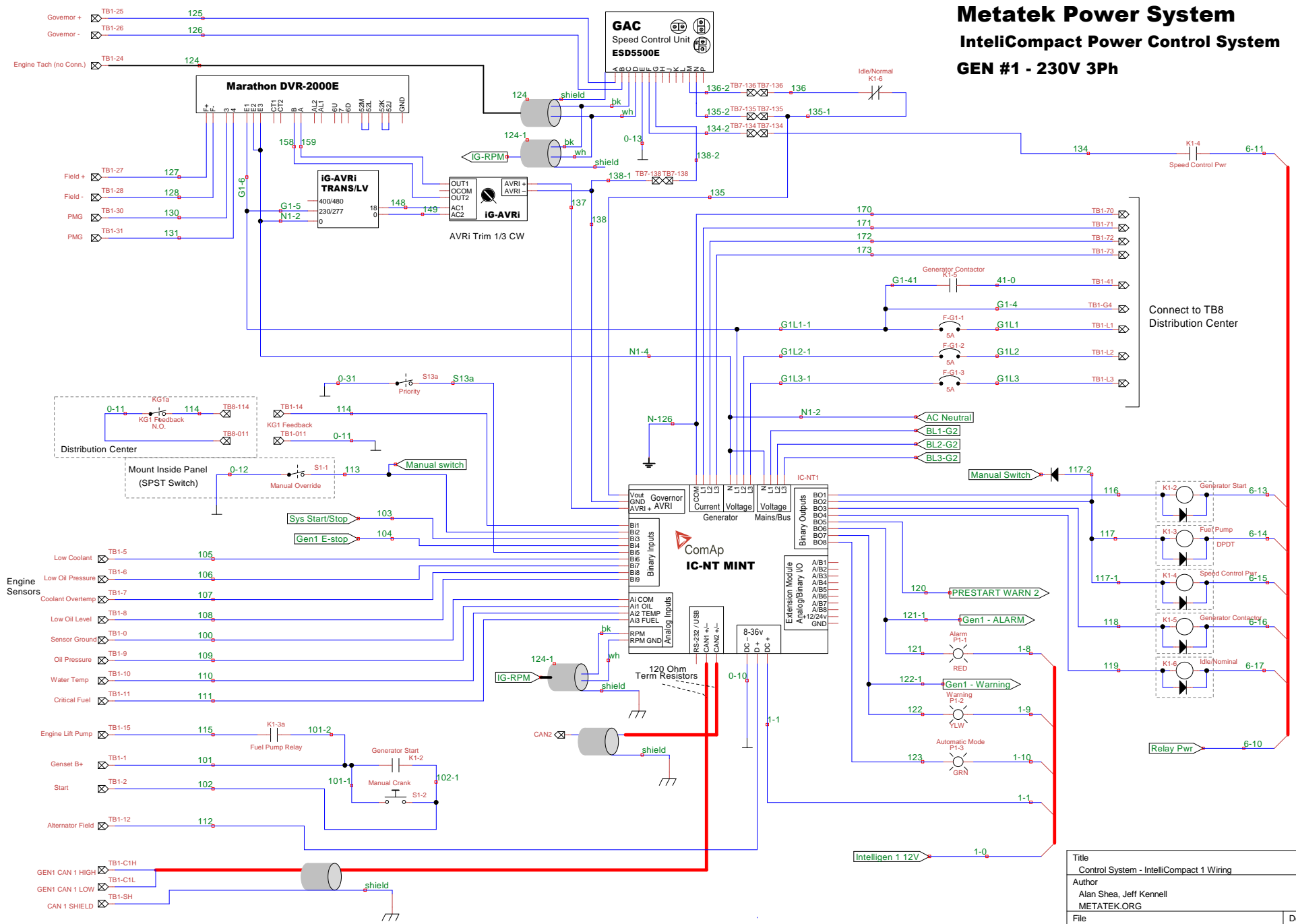


Metatek Power System

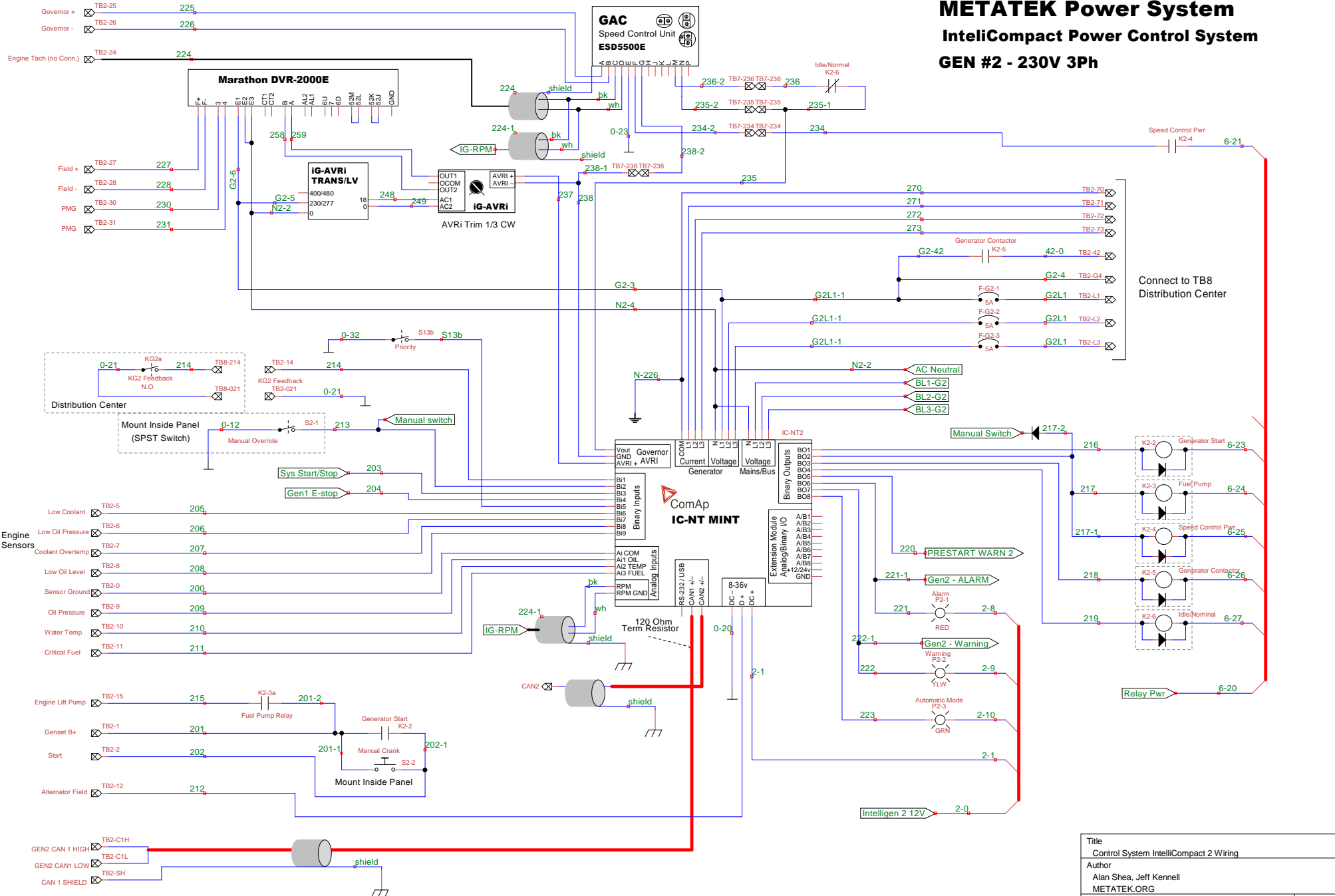
IntelliCompact Power Control System

GEN #1 - 230V 3Ph

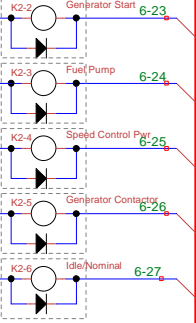


Title Control System - IntelliCompact 1 Wiring		
Author Alan Shea, Jeff Kennell METATEK.ORG		
File source\C103-900 Control Tower Schematics 3p.dsn	Document C103	
Revision 2.3	Date 2013-2-5	Sheets 4 of 11

METATEK Power System Intellicompact Power Control System GEN #2 - 230V 3PH



Connect to TB8 Distribution Center

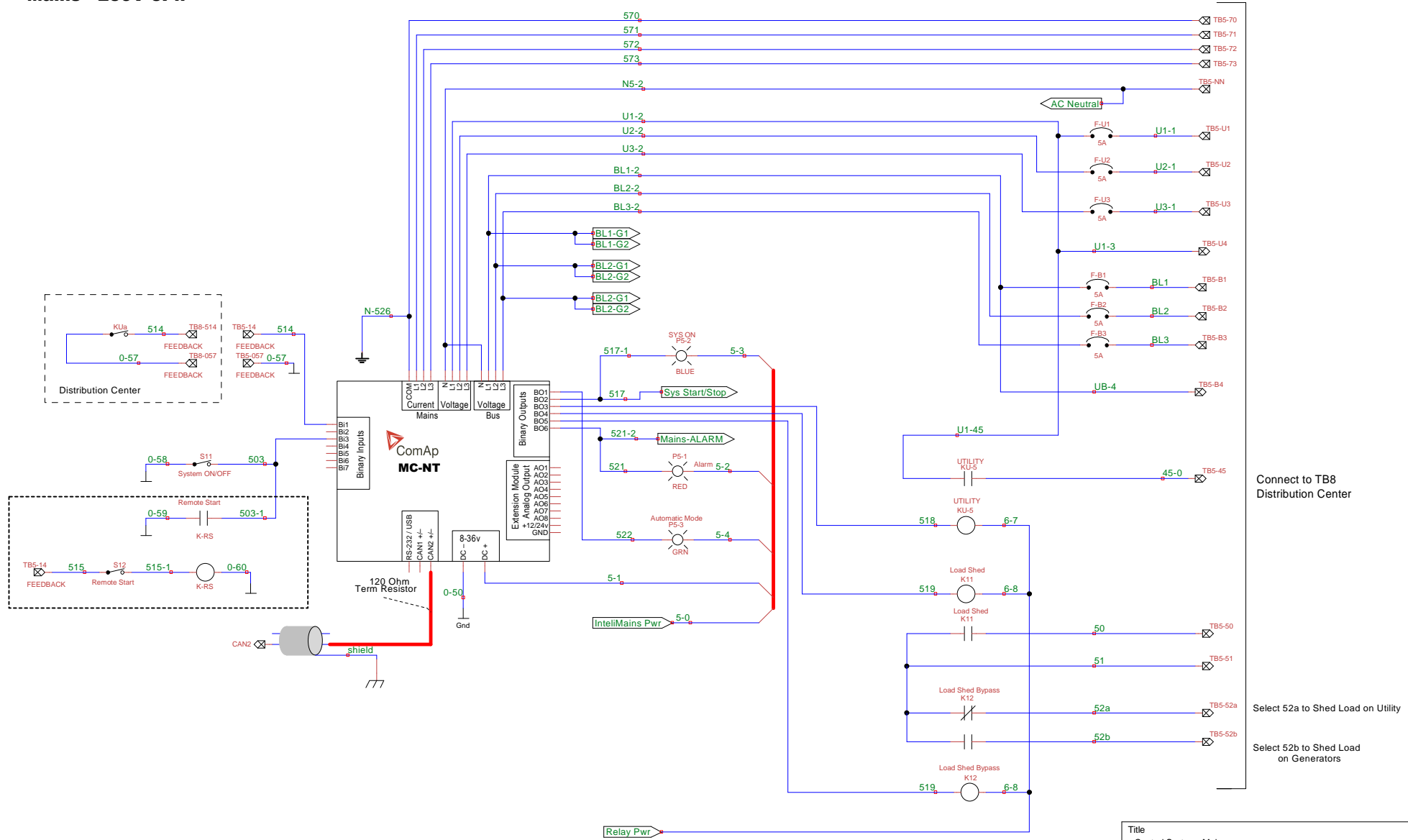


Title Control System Intellicompact 2 Wiring		Document C203
Author Alan Shea, Jeff Kennell METATEK.ORG		
File source\C103-900 Control Tower Schematics 3p.dsn	Date 2013-2-5	Sheets 5 of 11
Revision 2.3		

Metatek Power System

MainsCompact Power Control System

Mains - 230V 3Ph



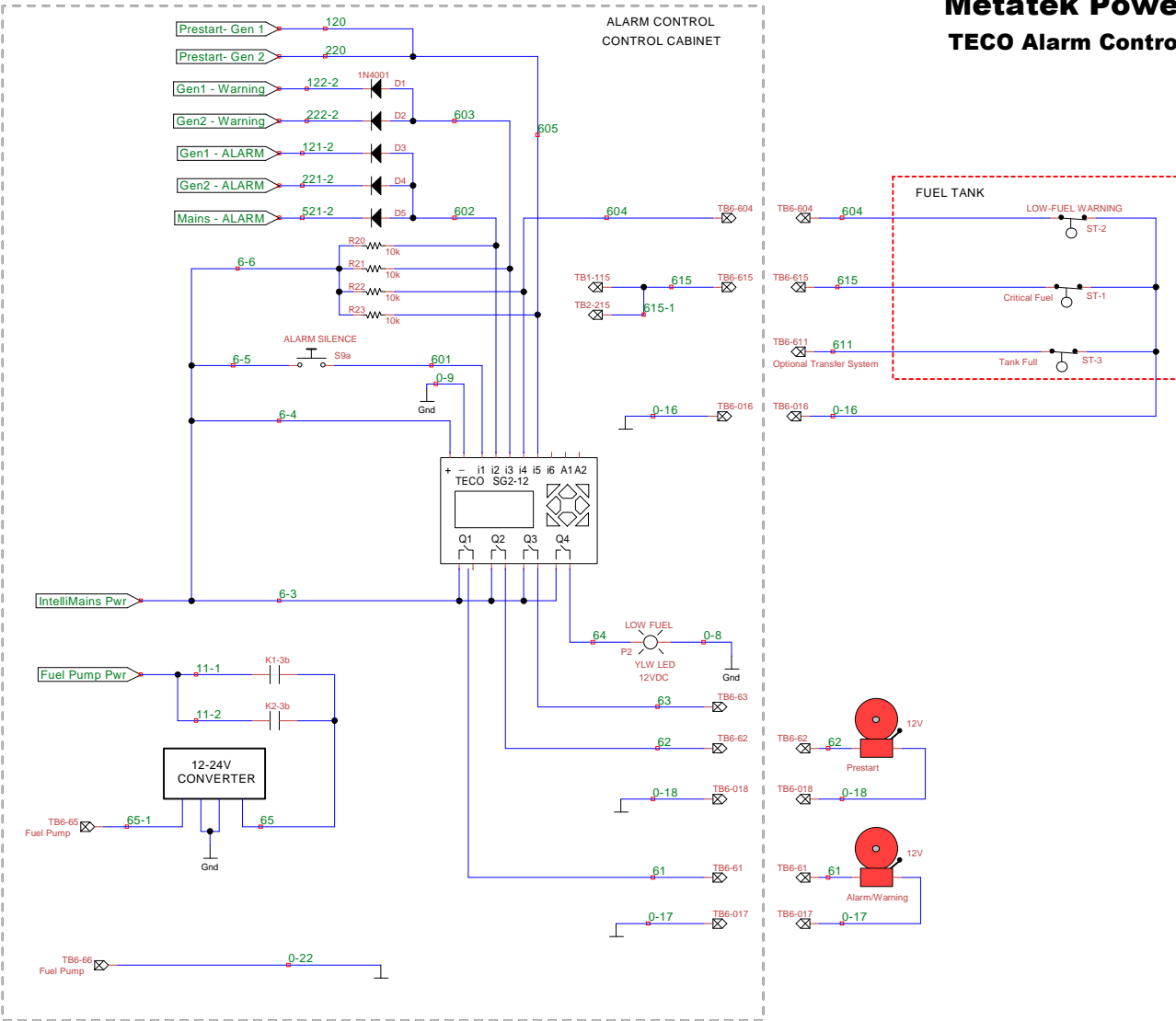
Connect to TB8 Distribution Center

Select 52a to Shed Load on Utility
Select 52b to Shed Load on Generators

Title Control System-Mains		
Author Alan Shea, Jeff Kennell METATEK.ORG		
File source\C103-900 Control Tower Schematics 3p.dsn	Document C303	
Revision 2.3	Date 2013-2-5	Sheets 6 of 11

Metatek Power System TECO Alarm Control System

6-10

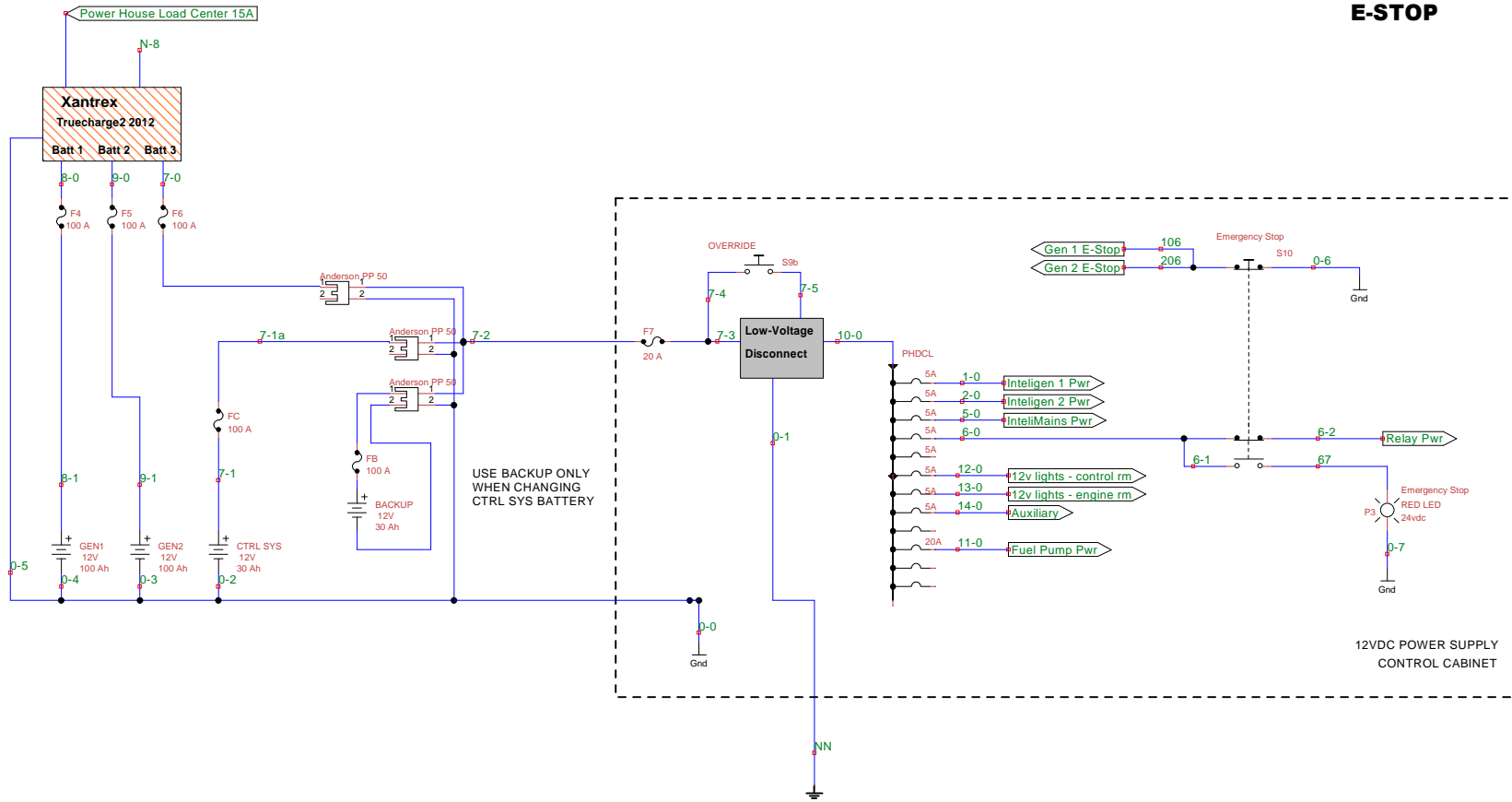


Title Control System- Alarm Control		
Author Alan Shea, Jeff Kennell METATEK.ORG		
File source\C103-900 Control Tower Schematics 3p.dsn	Document C600	
Revision 2.1	Date 2011-12-20	Sheets 7 of 11

Metatek Power System

12V Power Distribution

E-STOP



Title		
Control System- 12V Power Network		
Author		
Alan Shea, Jeff Kennell		
METATEK.ORG		
File	Document	
source\C103-900 Control Tower Schematics 3p.dsn	C900	
Revision	Date	Sheets
2.3	2013-2-5	8 of 11