

# MINI CONTACTORS AND OVERLOADS



from

**\$11**



6 to 12 Amp

**GMC-12M**



**Features:**

- Surface or DIN-rail mountable
- UL508 compliant
- 1/2 HP to 7-1/2HP
- 50/60Hz AC and DC versions available
- Direct-mounting overloads
- UL and CE certified
- RoHS compliant
- Auxiliary contacts standard (1 N.O.)

**Optional Accessories Include:**

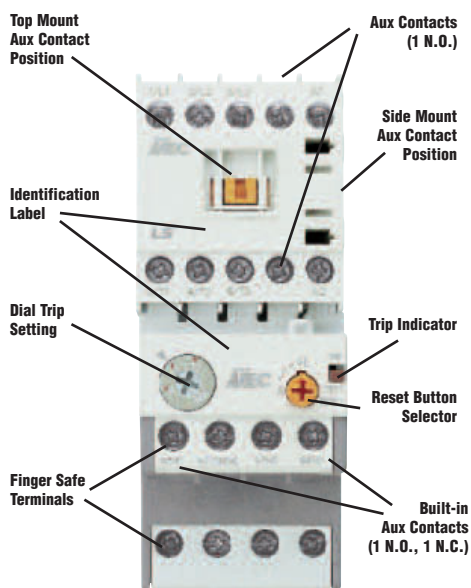
- Additional auxiliary contact blocks
- Reverse mounting kits and interlocks
- Time delay units
- Surge suppressors
- Direct mount to Manual Motor Starter (with optional adapter)



## MetaMec Mini Contactors (6 - 12A)

Part Number	Price	Coil Voltage	Aux. Contacts	Resistive Load (AC1)	UL HP Ratings (AC3 Motor Load)					Optional Overload Relay
					Single Phase		Three Phase			
					115V	230V	230V	460V	575V	
<b>6 Amp, Screw Terminals</b>										
GMC-6M-10-24	<b>\$11</b>	24VAC (50/60Hz AC)	1 N.O.	20A	0.5HP (9.8A)	1HP (8A)	1.5HP (6A)	3HP (4.8A)	3HP (3.9A)	GTK-12M
GMC-6M-10-120	<b>\$11</b>	120VAC (50/60Hz AC)								
GMC-6M-10-208	<b>\$11</b>	200 - 208VAC (50/60Hz AC)								
GMC-6M-10-230	<b>\$11</b>	230 - 240VAC (50/60Hz AC)								
GMC-6M-10-480	<b>\$11</b>	480VAC (50/60Hz AC)								
GMD-6M-10-12	<b>\$13</b>	12VDC								
GMD-6M-10-24	<b>\$13</b>	24VDC								
<b>9 Amp, Screw Terminals</b>										
GMC-9M-10-24	<b>\$12</b>	24VAC (50/60Hz AC)	1 N.O.	20A	0.5HP (9.8A)	1.5HP (10A)	3HP (9.6A)	5HP (7.6A)	5HP (6.1A)	GTK-12M
GMC-9M-10-120	<b>\$12</b>	120VAC (50/60Hz AC)								
GMC-9M-10-208	<b>\$12</b>	200 - 208VAC (50/60Hz AC)								
GMC-9M-10-230	<b>\$12</b>	230 - 240VAC (50/60Hz AC)								
GMC-9M-10-480	<b>\$12</b>	480VAC (50/60Hz AC)								
GMD-9M-10-12	<b>\$14</b>	12VDC								
GMD-9M-10-24	<b>\$14</b>	24VDC								
<b>12 Amp, Screw Terminals</b>										
GMC-12M-10-24	<b>\$13</b>	24VAC (50/60Hz AC)	1 N.O.	20A	1HP (16A)	2HP (12A)	3HP (9.6A)	7.5HP (11A)	7.5HP (9A)	GTK-12M
GMC-12M-10-120	<b>\$13</b>	120VAC (50/60Hz AC)								
GMC-12M-10-208	<b>\$13</b>	200 - 208VAC (50/60Hz AC)								
GMC-12M-10-230	<b>\$13</b>	230 - 240VAC (50/60Hz AC)								
GMC-12M-10-480	<b>\$13</b>	480VAC (50/60Hz AC)								
GMD-12M-10-12	<b>\$15</b>	12VDC								
GMD-12M-10-24	<b>\$15</b>	24VDC								

## Full Featured Contactor and Overload



## Mini Thermal Overload Relays

**Features:**

- Direct Mounting to Meta-Mec Mini Contactors
- UL508 compliant
- Screw terminals
- Differential current
- UL and CE certified
- RoHS compliant
- Built-in auxiliary contacts (1 N.O., 1 N.C.)



Part Number	Current Range	Price	Applicable Contactor
GTK-12M-0.16A	0.1-0.16A	<b>\$16</b>	GMC-6M GMC-9M GMC-12M GMD-6M GMD-9M GMD-12M
GTK-12M-0.25A	0.16-0.25A	<b>\$16</b>	
GTK-12M-0.4A	0.25-0.4A	<b>\$16</b>	
GTK-12M-0.63A	0.4-0.63A	<b>\$16</b>	
GTK-12M-1.0A	0.63-1A	<b>\$16</b>	
GTK-12M-1.6A	1-1.6A	<b>\$16</b>	
GTK-12M-2.5A	1.6-2.5A	<b>\$16</b>	
GTK-12M-4A	2.5-4A	<b>\$16</b>	
GTK-12M-6A	4-6A	<b>\$16</b>	
GTK-12M-8A	5-8A	<b>\$16</b>	
GTK-12M-9A	6-9A	<b>\$16</b>	
GTK-12M-10A	7-10A	<b>\$16</b>	
GTK-12M-13A	9-13A	<b>\$16</b>	

To order call **1.800.972.0436** or visit **factorymation.com**

No Games, No Gimmicks...  
...Just Great Products at Great Prices!!!

**Mini Series Accessories**

Part Number	Description	Price
<b>Auxiliary Contacts</b>		
AU-1M-10	Side-mount, 1 N.O., GMC-6 to GMC-12	\$2
AU-1M-01	Side-mount, 1 N.C., GMC-6 to GMC-12	\$2
AU-2M-20	Top-mount, 2 N.O., GMC-6 to GMC-12	\$4
AU-2M-11	Top-mount, 1 N.O. / 1 N.C., GMC-6 to GMC-12	\$4
AU-2M-02	Top-mount, 2 N.C., GMC-6 to GMC-12	\$4
AU-4M-40	Top-mount, 4 N.O., GMC-6 to GMC-12	\$5
AU-4M-22	Top-mount, 2 N.O. / 2 N.C., GMC-6 to GMC-12	\$5
AU-4M-04	Top-mount, 4 N.C., GMC-6 to GMC-12	\$5
<b>Direct Adapters for Manual Motor Starter + Contactor</b>		
DA-16HA	MMS-32H + GMC-xM (AC coil version)	\$7
DA-16HD	MMS-32H + GMD-xM (DC coil version)	\$7
<b>Mechanical Interlocks and Reversing Kits for GMC-6 to GMC-12</b>		
AR-12M	Mechanical Interlock for Reversing Configuration	\$2
AR-12MW	Mechanical Interlock and Reversing Wire Kit	\$8
<b>Contactor Plug-in Coil Surge Suppressors</b>		
AS-12M-1	GMC-6 to GMC-12, 24-48VAC, Varistor	\$1
AS-12M-2	GMC-6 to GMC-12, 60-127VAC, Varistor	\$1
AS-12M-3	GMC-6 to GMC-12, 200-240VAC, Varistor	\$1
AS-12M-4	GMD-6 to GMD-12, 12-24VDC, Varistor	\$1
<b>ON Delay and OFF Delay Timer Units</b>		
AT-12M-1N	Timer Unit, ON Delay, 0.1-30s, 24 to 48V AC/DC	\$45
AT-12M-1F	Timer Unit, OFF Delay, 0.1-30s, 24 to 48V AC/DC	\$45
AT-12M-2N	Timer Unit, ON Delay, 0.1-30s, 100 to 220V AC/DC	\$45
AT-12M-2F	Timer Unit, OFF Delay, 0.1-30s, 100 to 220V AC/DC	\$45
<b>Overload Separate Mount Units</b>		
AZ-12MH	Separate Mount Unit for GTK12M Overloads	\$5

**Auxiliary Contacts**



AU-1M

**Reversing Kit**



AR-12MW

**Separate Mount Unit**



AZ-12MH  
(Shown attached to GTK12M overload)



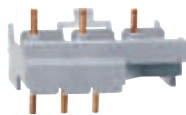
AU-2M

**Time Delay Unit**



AT-12M

**Direct Mount Adapter**



DA-16HA  
(Direct Adapter connects Mini Contactor and Manual Motor Starter, MMS-32H)

**Mini Contactor and Overload Specifications**

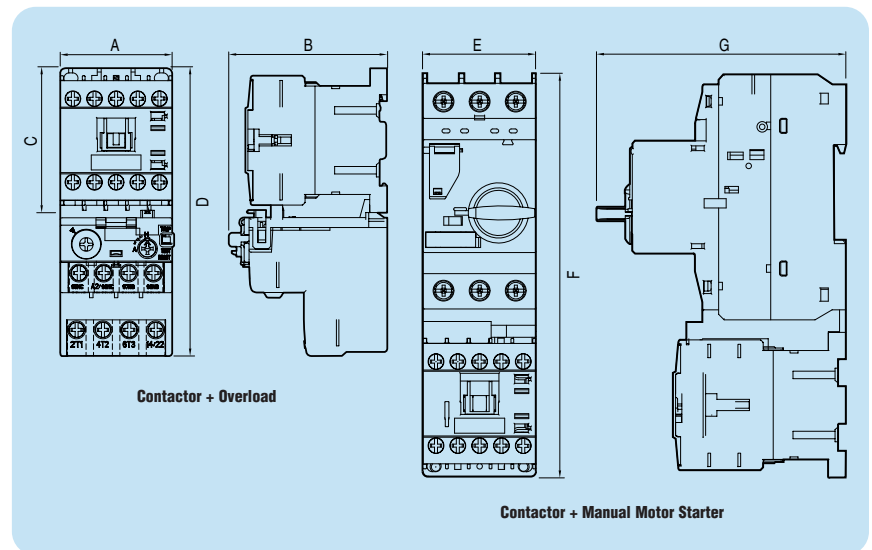
Contactor	AC Coil DC Coil	GMC-6M GMD-6M	GMC-9M GMD-9M	GMC-12M GMD-12M
Number of poles		3 pole		
Rated insulation voltage, UI		690V		
Short circuit max current		5kA		
Breaking capacity		60A	90A	120A
Maximum operations per hour (AC3)		1800		
Mechanical durability		12 million operations		
Electrical durability		1 million operations		
Auxiliary Contacts (Standard)		1 N.O.		
Thermal Magnetic Overload		GTK-12M		
Rated insulation voltage, UI		690V		
Trip class		Class 10		
Protection type		Differential, Phase Loss, Over Current		
Auxiliary Contacts (Standard)		1 N.O. / 1 N.C.		

**Coil Current Consumption for Mini Contactors**

Part Number		AC Coil			DC Coil		
		GMC-6M	GMC-9M	GMC-12M	GMD-6M	GMD-9M	GMD-12M
Standard Voltages	50/60Hz/DC	24 - 480V			12-24V		
Operating Voltage Limits	Pick-up	80 - 110%			80 - 110%		
	Drop-out	30 - 40%			10 - 30%		
Coil Consumption	Inrush	32VA	32VA	32VA	3W	3W	3W
	Sealed	6VA	6VA	6VA	3W	3W	3W
Thermal Dissipation	Watts	2	2	2	3	3	3

**Mini Contactor Dimensions**

Contactor	A	B	C	D	E	F	G
GMC-xM	1.77" (45mm)	2.51" (63.7mm)	2.28" (58mm)	4.57" (116.1mm)	1.77" (45mm)	6.52" (165.7mm)	3.92" (99.6mm)



**FREE Ground Shipping!**  
for online orders over \$500



# CONTACTORS AND OVERLOADS

# LS Industrial Systems

Formerly LG Industrial Systems



22 Amp



from  
**\$14**

### Features:

- DIN Rail-Mountable
- UL508 Compliant
- 0.5HP to 75HP
- Direct-Mounting Overload Relays
- UL and CE Certified
- RoHS Compliant
- Auxiliary Contacts Standard

### Optional Accessories Include:

- Additional Auxiliary Contact Blocks
- Replacement Coils
- Reverse Wiring Kits and Interlocks
- Direct Wiring Adapters for MMS
- Coil Surge Suppression
- Remote Reset

32 - 40 Amp



Removable Aux Contacts

## Metasol Contactors (9 - 100A)

## Metasol

Part Number	Price	Coil Voltage	Aux. Contacts	Resistive Load (AC1)	UL HP Ratings (AC3 Motor Load)						Optional O/L Relay
					Single Phase		Three Phase				
					115V	230V	208V	230V	460V	575V	
<b>22 Amp Frame, Screw Clamp Terminals</b>											
MC-9B-11-AC120	<b>\$14</b>	120VAC (50/60Hz)	1 N.O. 1 N.C.	25	0.5HP (9.8A)	1.5HP (10A)	2HP (7.5A)	3HP (9.6A)	5HP (7.6A)	7.5HP (9A)	MT-32
MC-9B-11-AC24	<b>\$14</b>	24VAC (50/60Hz)									
MC-9B-11-AC208	<b>\$14</b>	208VAC (50/60Hz)									
MC-9B-11-AC230	<b>\$14</b>	230VAC (50/60Hz)									
MC-9B-11-AC480	<b>\$14</b>	480VAC (60Hz)									
MC-9B-11-DC24	<b>\$15</b>	24VDC									
MC-12B-11-AC120	<b>\$16</b>	120VAC (50/60Hz)	1 N.O. 1 N.C.	25	0.75HP (13.8A)	2HP (12A)	3HP (10.6A)	5HP (15.2A)	7.5HP (11A)	10HP (11A)	MT-32
MC-12B-11-AC24	<b>\$16</b>	24VAC (50/60Hz)									
MC-12B-11-AC208	<b>\$16</b>	208VAC (50/60Hz)									
MC-12B-11-AC230	<b>\$16</b>	230VAC (50/60Hz)									
MC-12B-11-AC480	<b>\$16</b>	480VAC (60Hz)									
MC-12B-11-DC24	<b>\$20</b>	24VDC									
MC-18B-11-AC120	<b>\$26</b>	120VAC (50/60Hz)	1 N.O. 1 N.C.	32	1HP (16A)	3HP (17A)	5HP (16.7A)	7.5HP (22A)	10HP (14A)	15HP (17A)	MT-32
MC-18B-11-AC24	<b>\$26</b>	24VAC (50/60Hz)									
MC-18B-11-AC208	<b>\$26</b>	208VAC (50/60Hz)									
MC-18B-11-AC230	<b>\$26</b>	230VAC (50/60Hz)									
MC-18B-11-AC480	<b>\$26</b>	480VAC (60Hz)									
MC-18B-11-DC24	<b>\$29</b>	24VDC									
MC-22B-11-AC120	<b>\$26</b>	120VAC (50/60Hz)	1 N.O. 1 N.C.	40	2HP (24A)	3HP (17A)	7.5HP (24.2A)	10HP (28A)	15HP (21A)	20HP (22A)	MT-32
MC-22B-11-AC24	<b>\$26</b>	24VAC (50/60Hz)									
MC-22B-11-AC208	<b>\$26</b>	208VAC (50/60Hz)									
MC-22B-11-AC230	<b>\$26</b>	230VAC (50/60Hz)									
MC-22B-11-AC480	<b>\$26</b>	480VAC (60Hz)									
MC-22B-11-DC24	<b>\$33</b>	24VDC									
<b>40 Amp Frame, Screw Clamp Terminals</b>											
MC-32A-22-AC120	<b>\$33</b>	120VAC (50/60Hz)	2 N.O. 2 N.C.	50	2HP (24A)	5HP (28A)	7.5HP (24.2A)	10HP (28A)	20HP (27A)	25HP (27A)	MT-32
MC-32A-22-AC24	<b>\$33</b>	24VAC (50/60Hz)									
MC-32A-22-AC208	<b>\$33</b>	208VAC (50/60Hz)									
MC-32A-22-AC230	<b>\$33</b>	230VAC (50/60Hz)									
MC-32A-22-AC480	<b>\$33</b>	480VAC (60Hz)									
MC-32A-22-DC24	<b>\$41</b>	24VDC									
MC-40A-22-AC120	<b>\$40</b>	120VAC (50/60Hz)	2 N.O. 2 N.C.	60	3HP (34A)	7.5HP (40A)	15HP (46.2A)	20HP (54A)	30HP (40A)	40HP (41A)	MT-32
MC-40A-22-AC24	<b>\$40</b>	24VAC (50/60Hz)									
MC-40A-22-AC208	<b>\$40</b>	208VAC (50/60Hz)									
MC-40A-22-AC230	<b>\$40</b>	230VAC (50/60Hz)									
MC-40A-22-AC480	<b>\$40</b>	480VAC (60Hz)									
MC-40A-22-DC24	<b>\$48</b>	24VDC									

# Contactors and Overloads (cont'd)

## Metasol Contactors (9 - 100A)



### 50 - 65 Amp



Removable Aux Contacts

### 75 - 100 Amp



Removable Aux Contacts

Part Number	Price	Coil Voltage	Aux. Contacts	Resistive Load (AC1)	UL HP Ratings (AC3 Motor Load)						Optional Overload Relay
					Single Phase		Three Phase				
					115V	230V	208V	230V	460V	575V	
<b>65 Amp Frame, Box Lug Terminals</b>											
MC-50A-22-AC120	\$55	120VAC (50/60Hz)	2 N.O. 2 N.C.	70	3HP (34A)	10HP (50A)	20HP (59.4A)	25HP (68A)	40HP (52A)	50HP (52A)	MT-63
MC-50A-22-AC24	\$55	24VAC (50/60Hz)									
MC-50A-22-AC208	\$55	208VAC (50/60Hz)									
MC-50A-22-AC230	\$55	230VAC (50/60Hz)									
MC-50A-22-AC480	\$55	480VAC (60Hz)									
MC-50A-22-DC24	\$60	24VDC									
MC-65A-22-AC120	\$59	120VAC (50/60Hz)	2 N.O. 2 N.C.	100	5HP (56A)	15HP	25HP (74.8A)	30HP (80A)	50HP (65A)	60HP (62A)	MT-63
MC-65A-22-AC24	\$59	24VAC (50/60Hz)									
MC-65A-22-AC208	\$59	208VAC (50/60Hz)									
MC-65A-22-AC230	\$59	230VAC (50/60Hz)									
MC-65A-22-AC480	\$59	480VAC (60Hz)									
MC-65A-22-DC24	\$68	24VDC									
<b>100 Amp Frame, Box Lug Terminals</b>											
MC-75A-22-AC120	\$60	120VAC (60Hz)	2 N.O. 2 N.C.	110	5HP (56A)	15HP	25HP (74.8A)	30HP (80A)	50HP (65A)	60HP (62A)	MT-95
MC-75A-22-AC24	\$60	24VAC (60Hz)									
MC-75A-22-AC208	\$60	208VAC (60Hz)									
MC-75A-22-AC230	\$60	230VAC (60Hz)									
MC-75A-22-AC480	\$60	480VAC (60Hz)									
MC-75A-22-DC24	\$69	24VDC									
MC-85A-22-AC120	\$61	120VAC (60Hz)	2 N.O. 2 N.C.	135	7.5HP (80A)	15HP	30HP (88A)	40HP (104A)	60HP (77A)	75HP (77A)	MT-95
MC-85A-22-AC24	\$61	24VAC (60Hz)									
MC-85A-22-AC208	\$61	208VAC (60Hz)									
MC-85A-22-AC230	\$61	230VAC (60Hz)									
MC-85A-22-AC480	\$61	480VAC (60Hz)									
MC-85A-22-DC24	\$76	24VDC									
MC-100A-22-AC120	\$125	120VAC (60Hz)	2 N.O. 2 N.C.	140	10HP (100A)	20HP	30HP (88A)	40HP (104A)	75HP (96A)	75HP (77A)	MT-95
MC-100A-22-AC24	\$125	24VAC (60Hz)									
MC-100A-22-AC208	\$125	208VAC (60Hz)									
MC-100A-22-AC230	\$125	230VAC (60Hz)									
MC-100A-22-AC480	\$125	480VAC (60Hz)									
MC-100A-22-DC24	\$150	24VDC									

## Thermal Overload Relays

### Features:

- Trip Ranges from 0.1A to 85A
- Direct Mounting to Metasol Contactors
- Screw Terminals
- Differential Current / Phase Loss Protection
- Built-in Auxiliary Contacts (1 N.O. / 1 N.C.)
- UL and CE Certified

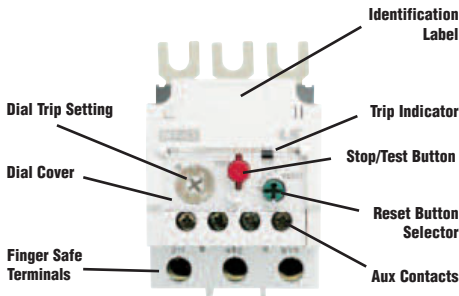
from **\$22**



Separate Mount Accessory UZ-32S



Direct Mount



### MT-32



### MT-63



### MT-95



Part Number	Aux Contacts	Current Range	Price	Applicable Contactor
MT-32S-0.16A	1 N.O. / 1N.C.	0.1-0.16A	\$22	MC-9B MC-12B MC-18B MC-22B MC-32A MC-40A
MT-32S-0.25A	1 N.O. / 1N.C.	0.16-0.25A	\$22	
MT-32S-0.4A	1 N.O. / 1N.C.	0.25-0.4A	\$22	
MT-32S-0.63A	1 N.O. / 1N.C.	0.4-0.63A	\$22	
MT-32S-1A	1 N.O. / 1N.C.	0.63-1A	\$22	
MT-32S-1.6A	1 N.O. / 1N.C.	1-1.6A	\$22	
MT-32S-2.5A	1 N.O. / 1N.C.	1.6-2.5A	\$22	
MT-32S-4A	1 N.O. / 1N.C.	2.5-4A	\$22	
MT-32S-6A	1 N.O. / 1N.C.	4-6A	\$22	
MT-32S-8A	1 N.O. / 1N.C.	5-8A	\$22	
MT-32S-9A	1 N.O. / 1N.C.	6-9A	\$22	
MT-32S-10A	1 N.O. / 1N.C.	7-10A	\$22	
MT-32S-13A	1 N.O. / 1N.C.	9-13A	\$22	
MT-32S-18A	1 N.O. / 1N.C.	12-18A	\$22	
MT-32S-22A	1 N.O. / 1N.C.	16-22A	\$22	
MT-32S-25A	1 N.O. / 1N.C.	18-25A	\$22	
MT-32S-32A	1 N.O. / 1N.C.	22-32A	\$29	
MT-32S-40A	1 N.O. / 1N.C.	28-40A	\$29	
MT-63L-36A	1 N.O. / 1N.C.	24-36A	\$42	MC-50A MC-65A
MT-63L-40A	1 N.O. / 1N.C.	28-40A	\$42	
MT-63L-50A	1 N.O. / 1N.C.	34-50A	\$42	
MT-63L-65A	1 N.O. / 1N.C.	45-65A	\$42	MC-75A MC-85A MC-100A
MT-95L-65A	1 N.O. / 1N.C.	45-65A	\$46	
MT-95L-75A	1 N.O. / 1N.C.	54-75A	\$46	
MT-95L-85A	1 N.O. / 1N.C.	63-85A	\$46	
MT-95L-95A	1 N.O. / 1N.C.	70-95A	\$46	



**FREE Ground Shipping!**  
for online orders over \$500





### Contactor and Overload Accessories

Part Number	Description	Price
<b>Auxiliary Contacts</b>		
UA-1-11	Side-mount, 1 N.O. / 1N.C., MC-9 to MC-100	\$6
AU-2-11	Top-mount, 1 N.O. / 1 N.C., MC-9 to MC-100	\$6
AU-4-22	Top-mount, 2 N.O. / 2 N.C., MC-9 to MC-100	\$13
AU-4-40	Top-mount, 4 N.O., MC-9 to MC-100	\$13
AU-4-04	Top-mount, 4 N.C., MC-9 to MC-100	\$13
<b>MMS + Contactor Direct Adapters</b>		
DA-22HA	MMS-32H + MC-9B-22B AC	\$7
DA-22HD	MMS-32H + MC-9B-22B DC	\$7
DA-32HA	MMS-32H + MC-32A-40A AC	\$7
DA-32HD	MMS-32H + MC-32A-40A DC	\$7
DA-63A	MMS-63H + MC-50A to MC-65A AC	\$8
DA-63D	MMS-63H + MC-50A to MC-65A DC	\$8
DA-95A	MMS-100H + MC-75A to MC-100A AC	\$10
DA-95D	MMS-100H + MC-75A to MC-100A DC	\$10
<b>MMS + Contactor Mounting Unit / Base Plate</b>		
MU-45	MMS-32H + MC-9 to MC-40 (45mm)	\$12
MU-55	MMS-63H + MC-50 to MC-65 (55mm)	\$15
MU-70	MMS100H + MC-75 to MC-100 (70mm)	\$16
<b>Reversing Kits</b>		
UR-02	Mechanical Interlock, 2 N.C., MC-9 to MC-100	\$10
UW-22	Reversing Wire Kit for MC-9 to MC-22	\$10
UW-32	Reversing Wire Kit for MC-32 to MC-40	\$10
UW-63	Reversing Wire Kit for MC-50 to MC-65	\$16
UW-95	Reversing Wire Kit for MC-75 to MC-100	\$30
<b>Contactor Coil Surge Suppressors</b>		
US-1	MC-9 to MC-100, AC24-48V, Varistor + RC	\$7
US-2	MC-9 to MC-100, AC100-125V, Varistor + RC	\$7
US-3	MC-9 to MC-100, AC200-240V, Varistor + RC	\$7
US-4	MC-9 to MC-100, DC24-48V, Varistor + RC	\$7
US-5	MC-9 to MC-100, DC100-125V, Varistor + RC	\$7
US-6	MC-9 to MC-100, DC200-220V, Varistor + RC	\$7
US-11	MC-9 to MC-100, ACDC24-48V, Varistor	\$5
US-12	MC-9 to MC-100, ACDC100-125V, Varistor	\$5
US-13	MC-9 to MC-100, ACDC200-240V, Varistor	\$5
US-14	MC-9 to MC-100, ACDC380-440V, Varistor	\$5
US-22	MC-9 to MC-100, RC	\$5
<b>Overload Remote Reset Kits</b>		
UM-4R	400mm cable, MT-12 to MT-95	\$38
UM-5R	500mm cable, MT-12 to MT-95	\$41
UM-6R	600mm cable, MT-12 to MT-95	\$46
<b>Overload Separate Mount Units</b>		
AZ-12MH	for MT-12 Overload	\$5
UZ-32S	for MT-32S Overload	\$6
UZ-63L	for MT-63L Overload	\$7
UZ-95L	for MT-95L Overload	\$9



Auxiliary Contact  
UA-1-11



MMS Direct Adapter  
DA-95A



MMS + Contactor  
Mounting Unit  
MU-45



Mechanical Interlock  
with Aux Contact  
UR-02



Surge Suppressor  
US-2



Remote Reset Cable  
UM-4R



O/L Separate Mount  
UZ-32S  
(Shown with O/L)

### Replacement Coils for Metasol Contactors

Metasol Contactor Replacement Coils		
Part Number	Input Rating	Price
<b>MC-9 to MC-22</b>		
S-C1-AC24DF	AC24V 50/60Hz	\$10
S-C1-AC120DF	AC120V 50/60Hz	\$10
S-C1-AC208	AC208V 60Hz	\$10
S-C1-AC230DF	AC230V 50/60Hz	\$10
S-C1-AC277	AC277V 60Hz	\$10
S-C1-AC480	AC480V 60Hz	\$10
S-C1-DC12	DC12V	\$13
S-C1-DC24	DC24V	\$13
<b>MC-32 to MC-40</b>		
S-C2-AC24DF	AC24V 50/60Hz	\$11
S-C2-AC120DF	AC120V 50/60Hz	\$11
S-C2-AC208	AC208V 60Hz	\$11
S-C2-AC230DF	AC230V 50/60Hz	\$11
S-C2-AC277	AC277V 60Hz	\$11
S-C2-AC480	AC480V 60Hz	\$11
S-C2-DC12	DC12V	\$15
S-C2-DC24	DC24V	\$15
<b>MC-50 to MC-65</b>		
S-C3-AC24DF	AC24V 50/60Hz	\$14
S-C3-AC120DF	AC120V 50/60Hz	\$14
S-C3-AC208	AC208V 60Hz	\$14
S-C3-AC230DF	AC230V 50/60Hz	\$14
S-C3-AC277	AC277V 60Hz	\$14
S-C3-AC480	AC480V 60Hz	\$14
S-C3-DC12	DC12V	\$18
S-C3-DC24	DC24V	\$18
<b>MC-75 to MC-100</b>		
S-C4-AC24DF	AC24V 50/60Hz	\$18
S-C4-AC120DF	AC120V 50/60Hz	\$18
S-C4-AC208	AC208V 60Hz	\$18
S-C4-AC230DF	AC230V 50/60Hz	\$18
S-C4-AC277	AC277V 60Hz	\$18
S-C4-AC480	AC480V 60Hz	\$18
S-C4-DC12	DC12V	\$22
S-C4-DC24	DC24V	\$22



Replacement Coil  
S-C1-DC



Replacement Coil  
S-C2-AC

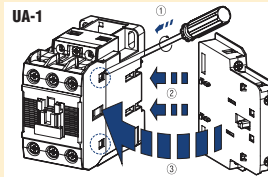


Replacement Coil  
S-C3-AC

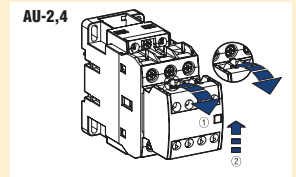


Replacement Coil  
S-C4-DC

#### Installing Auxiliary Contacts



To install side-mounting aux contacts remove the indicated part in the circle first. Then fit each part as shown. To separate push forward and pull.



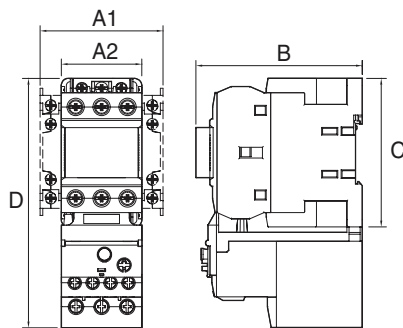
To install top-mounting aux contacts position on top of contactor and push down. To separate, pull the lever of the contact block and push upward.

### Metasol Contactor and Overload Specifications

Contactor	MC-9A	MC-12A	MC-18A	MC-9B	MC-12B	MC-18B	MC-22B	MC-32A	MC-40A	MC-50A	MC-65A	MC-75A	MC-85L	MC-100L	
Number of poles	3 pole														
Rated operational voltage, Ue	690V														
Rated insulation voltage, Ui	690V			690V			1000V		1000V		1000V				
Rated frequency	50/60Hz														
Rated impulse withstand voltage, Uimp	8kV			8kV			8kV		8kV		8kV				
Maximum operations per hour (AC3)	1800			1800			1800		1800		1800				
Mechanical durability	15mil. operations			15mil. operations			12mil. operations		12mil. operations		12mil. operations				
Electrical durability	2.5mil. operations			2.5mil. operations			2mil. operations		2mil. operations		2mil. operations				
Auxiliary Contacts (Standard)	1 N.O.			1 N.O. / 1 N.C.			2 N.O. / 2 N.C.		2 N.O. / 2 N.C.		2 N.O. / 2 N.C.				
Thermal Magnetic Overload	MT-12			MT-12			MT-32	MT-32		MT-63		MT-95			
Rated operational voltage, Ue	690V														
Rated insulation voltage, Ui	690V														
Rated impulse withstand voltage, Uimp	6kV														
Trip class	10A														
Setting range	0.1-18A			0.1-18A			0.1-40A	0.1-40A		4-65A		7-95A			

### Coil Current Consumption

Part Number		MC-9A MC-12A MC-18A	MC-9B MC-12B MC-18B MC-22B	MC-32A MC-40A	MC-50A MC-65A	MC-75A MC-85A MC-100A
<b>AC Coil</b>						
Control Voltage	50Hz	24, 120, 230				
	60Hz	24, 120, 208, 230, 277, 480				
Voltage Limit	Operational	85-110%				
	Drop-out	30-60%				
Coil Consumption @ 20°C (220V, 50/60Hz)	Inrush (VA)	80	80	80	120	220
	Sealed (VA)	11	11	9	11	16
<b>DC Coil</b>						
Control Voltage	DC	12, 24				
Voltage Limit	Operational	70-110%				
	Drop-out	10-30%				
Current Consumption	Inrush (W)	9	9	7	9	18
	Sealed (W)	9	9	7	9	18



### Metasol Contactor and Overload Dimensions

Contactor	A1	A2	B	C	D
MC-9 AC – MC-18 AC	-	1.77" (45mm)	3.23" (82mm)	2.89" (73.5mm)	5.11" (129.9mm)
MC-9 DC – MC-18 DC	-	1.77" (45mm)	4.63" (117.7mm)	2.89" (73.5mm)	5.11" (129.9mm)
MC-22 AC	-	1.77" (45mm)	3.39" (86mm)	2.89" (73.5mm)	5.11" (129.9mm)
MC-22 DC	-	1.77" (45mm)	4.63" (117.7mm)	2.89" (73.5mm)	5.11" (129.9mm)
MC-32 AC – MC-40 AC	2.72" (69mm)	1.77" (45mm)	3.66" (93mm)	3.27" (83mm)	5.49" (139.4mm)
MC-32 DC – MC-40 DC	2.72" (69mm)	1.77" (45mm)	4.73" (120.1mm)	3.27" (83mm)	5.49" (139.4mm)
MC-50 AC – MC-65 AC	3.11" (79mm)	2.17" (55mm)	4.80" (121.8mm)	4.17" (106mm)	6.45" (163.8mm)
MC-50 DC – MC-65 DC	3.11" (79mm)	2.17" (55mm)	5.87" (149.2mm)	4.17" (106mm)	6.45" (163.8mm)
MC-75 AC – MC-100 AC	3.70" (94mm)	2.76" (70mm)	5.41" (137.3mm)	5.51" (140mm)	8.32" (211.4mm)
MC-75 DC – MC-100 DC	3.70" (94mm)	2.76" (70mm)	6.84" (173.8mm)	5.51" (140mm)	8.32" (211.4mm)

### Optional Auxiliary Contact Specifications

Part Number	UA-1-11	AU-2-11	AU-4-22	AU-4-40	AU-4-04
Rated Thermal Current (Ith)	AC: 10A	AC: 16A			
AC-15, A600	120V: 6A, 240V: 3A, 380V: 1.9A 480V: 1.5A, 500V: 1.4A, 600V: 1.2A				
DC-13, P300	125V: 1.1A, 250V: .055A, 400V: 0.31A, 500V: 0.27A, 600V: 0.2A				
Mechanical Endurance	500,000 operations				
Conductor Size	18AWG - 10AWG				



**FREE Ground Shipping!**  
for online orders over \$500



# CONTACTORS AND OVERLOADS

# LS Industrial Systems

Formerly LG Industrial Systems

META  
**MEC**



from  
**\$153**

## MetaMec Contactors (100 - 800A)

Part Number	Price	Coil Voltage (50/60Hz AC)	Aux. Contacts	Resistive Load (AC1)	UL HP Ratings (AC3 Motor Load)						Optional Overload Relay
					Single Phase		Three Phase				
					115V	230V	208V	230V	460V	575V	
<b>100 - 125 Amp, Lug Terminals</b>											
GMC-100-AC/DC24	<b>\$153</b>	24VAC/24VDC									
GMC-100-AC/DC100-200	<b>\$153</b>	100-240VAC/100-220VDC	2 N.O. 2 N.C.	160	7.5HP (80A)	15HP	30HP (88A)	30HP (80A)	60HP (77A)	60HP (62A)	GTK-100
GMC-100-AC500	<b>\$153</b>	440-575VAC									
GMC-125-AC/DC24	<b>\$196</b>	24VAC/DC									
GMC-125-AC/DC100-200	<b>\$196</b>	100-240VAC/100-220VDC	2 N.O. 2 N.C.	160	10HP (100A)	20HP	40HP (114A)	40HP (104A)	75HP (96A)	75HP (77A)	GTK-100
GMC-125-AC500	<b>\$196</b>	440-575VAC									
<b>150 Amp, Lug Terminals</b>											
GMC-150-AC/DC24	<b>\$229</b>	24VAC/DC									
GMC-150-AC/DC100-200	<b>\$229</b>	100-240VAC/100-220VDC	2 N.O. 2 N.C.	210	15HP	25HP	40HP (114A)	50HP (130A)	100HP (124A)	100HP (99A)	GTK-150
GMC-150-AC500	<b>\$229</b>	440-575VAC									
<b>180 - 220 Amp, Lug Terminals</b>											
GMC-180-AC/DC24	<b>\$302</b>	24VAC/DC									
GMC-180-AC/DC100-200	<b>\$302</b>	100-240VAC/100-220VDC	2 N.O. 2 N.C.	230	15HP	30HP	60HP (169A)	60HP (154A)	125HP (156A)	125HP (125A)	GTK-220
GMC-180-AC500	<b>\$302</b>	440-575VAC									
GMC-220-AC/DC24	<b>\$358</b>	24VAC/DC									
GMC-220-AC/DC100-200	<b>\$358</b>	100-240VAC/100-220VDC	2 N.O. 2 N.C.	275	15HP	40HP	60HP (169A)	75HP (192A)	150HP (180A)	150HP (144A)	GTK-220
GMC-220-AC500	<b>\$358</b>	440-575VAC									
<b>300 - 400 Amp, Lug Terminals</b>											
GMC-300-AC/DC100-200	<b>\$467</b>	100-240VAC/100-220VDC	2 N.O. 2 N.C.	350	-	-	100HP (273A)	100HP (248A)	200HP (240A)	200HP (192A)	GTK-400
GMC-300-AC500	<b>\$467</b>	440-575VAC									
GMC-400-AC/DC100-200	<b>\$512</b>	100-240VAC/100-220VDC	2 N.O. 2 N.C.	450	-	-	125HP (343A)	150HP (360A)	300HP (361A)	300HP (289A)	GTK-400
GMC-400-AC500	<b>\$512</b>	440-575VAC									
<b>600 - 800 Amp, Lug Terminals</b>											
GMC-600-AC/DC100	<b>\$1097</b>	100-127VAC/100-110VDC									
GMC-600-AC/DC200	<b>\$1097</b>	200-240VAC/200-220VDC	2 N.O. 2 N.C.	660	-	-	150HP (396A)	200HP (480A)	400HP (477A)	400HP (382A)	GTK-600
GMC-600-AC500	<b>\$1097</b>	440-575VAC									
GMC-800-AC/DC100	<b>\$1166</b>	100-127VAC/100-110VDC									
GMC-800-AC/DC200	<b>\$1166</b>	200-240VAC/200-220VDC	2 N.O. 2 N.C.	900	-	-	200HP (528A)	300HP	600HP	600HP	GTK-600
GMC-800-AC500	<b>\$1166</b>	440-575VAC									

### Features:

- Surface Mountable
- UL508 Compliant
- 7.5HP to 600HP
- 50/60Hz AC
- Direct-Mounting Overloads
- UL and CE Certified
- RoHS Compliant
- Auxiliary Contacts Standard (2 N.O. / 2 N.C.)

### Optional Accessories Include:

- Additional Auxiliary Contact Blocks
- Replacement Coils
- Reverse Mounting Kits and Interlocks

GMC-100 &  
GMC-125



GMC-180 &  
GMC-220



GMC-300 &  
GMC-400



GMC-600 &  
GMC-800



To order call **1.800.972.0436** or visit **factorymation.com**

No Games, No Gimmicks...

...Just Great Products at Great Prices!!!

# Contactors and Overloads (cont'd)

## Features:

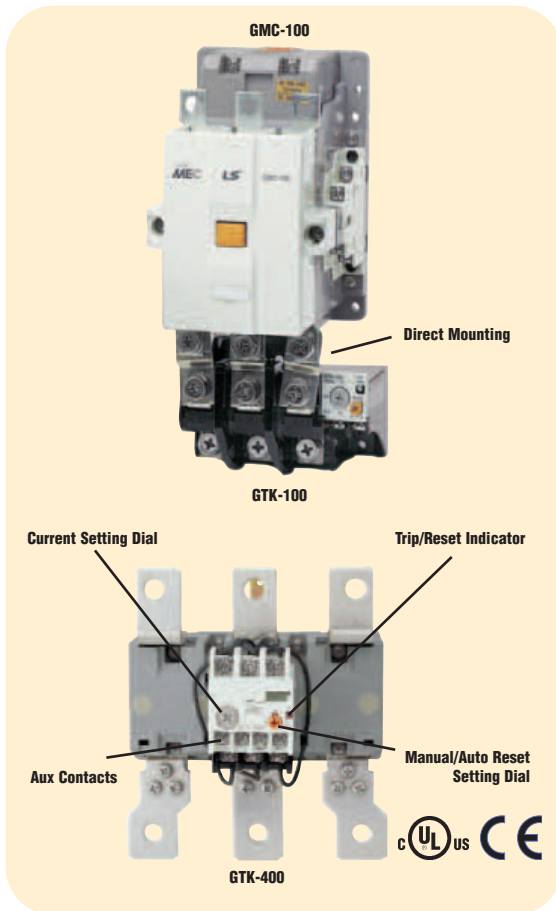
- Trip Ranges from 65A to 800A
- Direct Mounting to MetaMec Contactors
- Lug Terminals
- Differential Current / Phase Loss Protection
- Built-in Auxiliary Contacts (1 N.O. / 1 N.C.)
- Ambient Compensated -5° to 40°C
- Manual / Automatic Reset
- Trip Class 10
- UL and CE Certified

from  
**\$84**



## Thermal Overload Relays

Part Number	Current Range	Price	Applicable Contactor
GTK-100/65-100A	65-100A	<b>\$84</b>	GMC-100 GMC-125
GTK-100/85-125A	85-125A	<b>\$84</b>	
GTK-150/85-125A	85-125A	<b>\$119</b>	GMC-150
GTK-150/100-150A	100-150A	<b>\$119</b>	
GTK-220/100-160A	100-160A	<b>\$139</b>	GMC-180 GMC-220
GTK-220/120-180A	120-180A	<b>\$139</b>	
GTK-220/160-240A	160-240A	<b>\$139</b>	GMC-300 GMC-400
GTK-400/160-240A	160-240A	<b>\$171</b>	
GTK-400/200-300A	200-300A	<b>\$171</b>	GMC-600 GMC-800
GTK-400/260-400A	260-400A	<b>\$171</b>	
GTK-600/260-400A	260-400A	<b>\$491</b>	GMC-600 GMC-800
GTK-600/400-600A	400-600A	<b>\$491</b>	
GTK-600/520-800A	520-800A	<b>\$491</b>	



## Replacement coils for Meta-MEC Contactors

Part Number	Description	Price
RC-GMC-100-150-AC/DC24	GMC-100, 125, 150; 24VAC (50/60Hz)/24VDC	<b>\$84</b>
RC-GMC-100-150-AC/DC100-200	GMC-100, 125, 150; 100-240VAC (50/60Hz)/100-220VDC	<b>\$84</b>
RC-GMC-100-150-AC/DC500	GMC-100, 125, 150; 440-575VAC (50/60Hz)	<b>\$84</b>
RC-GMC-180-220-AC/DC24	GMC-180, 220; 24VAC (50/60Hz)/24VDC	<b>\$92</b>
RC-GMC-180-220-AC/DC100-200	GMC-180, 220; 100-240VAC (50/60Hz)/100-220VDC	<b>\$92</b>
RC-GMC-180-220-AC/DC500	GMC-180, 220; 440-575VAC (50/60Hz)	<b>\$92</b>
RC-GMC-300-400-AC/DC100-200	GMC-300, 400; 100-240VAC (50/60Hz)/100-220VDC	<b>\$143</b>
RC-GMC-300-400-AC/DC500	GMC-300, 400; 440-575(50/60Hz)VAC	<b>\$143</b>
RC-GMC-600-800-AC/DC100	GMC-600, 800; 100-127VAC (50/60Hz)/100-110VDC	<b>\$171</b>
RC-GMC-600-800-AC/DC200	GMC-600, 800; 200-240VAC (50/60Hz)/200-220VDC	<b>\$171</b>
RC-GMC-600-800-AC/DC500	GMC-600, 800; 440-575VAC (50/60Hz)	<b>\$171</b>

## MetaMec Contactor and Overload Accessories

Part Number	Description	Price
<b>Mechanical Interlocks</b>		
AR-100	Mechanical Interlock for GMC-100 to 150	<b>\$14</b>
AR-180	Mechanical Interlock for GMC-180 to 400	<b>\$21</b>
AR-600	Mechanical Interlock for GMC-600 to 800	<b>\$295</b>
<b>Reversing Base Plates</b>		
RBP-GMC-100/125R	Reversing Base Plate Interlock, GMC-100R/125R	<b>\$25</b>
RBP-GMC-150R	Reversing Base Plate Interlock, GMC-150R	<b>\$27</b>
RBP-GMC-180/220R	Reversing Base Plate Interlock, GMC-180/220R	<b>\$36</b>
RBP-GMC-300/400R	Reversing Base Plate Interlock, GMC-300/400R	<b>\$48</b>
<b>Terminal Covers</b>		
AP100	Terminal Cover for GMC-100, 125 (input and output)	<b>\$8</b>
AP150	Terminal Cover for GMC-150 (input and output)	<b>\$8</b>
AP220	Terminal Cover for GMC-180, 220 (input and output)	<b>\$9</b>
AP400	Terminal Cover for GMC-300, 400 (input and output)	<b>\$10</b>
AP600	Terminal Cover for GMC-600, 800 (input and output)	<b>\$21</b>
APT100	Terminal Cover for GTK, GTH-125 (output)	<b>\$4</b>
APT150	Terminal Cover for GTK, GTH-150 (output)	<b>\$4</b>
APT220	Terminal Cover for GTK, GTH-220 (output)	<b>\$4</b>
APT400	Terminal Cover for GTK, GTH-400 (output)	<b>\$4</b>
APT600	Terminal Cover for GTK, GTH-600 (output)	<b>\$33</b>
<b>Insulation Barriers</b>		
AI-100	Insulation Barrier for GMC-100, 125, 150 (input and output)	<b>\$3</b>
AI-180	Insulation Barrier for GMC-180, 220, 300, 400 (input and output)	<b>\$3</b>
AI-600	Insulation Barrier for GMC-600, 800 (input and output)	<b>\$3</b>
<b>Lug Terminals</b>		
AJ125	Lug Terminals for GMC-100, 125 (3 pcs)	<b>\$10</b>
AJ150	Lug Terminals for GMC-150 (3 pcs)	<b>\$13</b>
AJ220	Lug Terminals for GMC-180, 220 (3 pcs)	<b>\$42</b>
AJ400	Lug Terminals for GMC-300, 400 (3 pcs)	<b>\$83</b>
AJ800	Lug Terminals for GMC-600, 800 (3 pcs)	<b>\$156</b>



Mechanical Interlock (shown between contactors) AR-100



Terminal Cover AP220



Lug Terminals for GMC-150 AJ150



**FREE Ground Shipping!\***  
for online orders over \$500



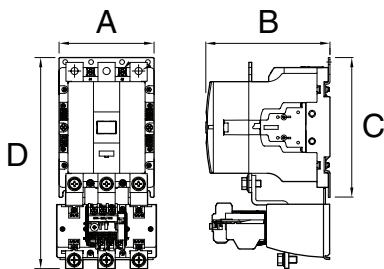


## MetaMec Contactor and Overload Specifications

Model	GMC-100	GMC-125	GMC-150	GMC-180	GMC-220	GMC-300	GMC-400	GMC-600	GMC-800
Number of poles	3 pole								
Rated operational voltage, Ue	690V								
Rated current, Im	105A	125A	150A	180A	220A	300A	400A	630A	800A
Short circuit max current	1050A	1250A	1500A	1800A	2200A	3000A	4000A	6300A	8000A
Breaking capacity	1050A	1250A	1500A	1800A	2200A	3000A	4000A	6300A	8000A
Maximum operations per hour (AC3)	1200								
Mechanical durability	5 million operations								
Electrical durability	1 million operations						500k operations		
Auxiliary Contacts (Standard)	2 N.O. / 2 N.C.		2 N.O. / 2 N.C.		2 N.O. / 2 N.C.		2 N.O. / 2 N.C.		2 N.O. / 2 N.C.
Thermal Magnetic Overload	GTK-100		GTK-150		GTK-220		GTK-400		GTK-600
Rated operational voltage, Ue	690V								
Rated current, Im	105A	125A	150A	180A	220A	300A	400A	630A	800A
Short circuit max current	1050A	1250A	1500A	1800A	2200A	3000A	4000A	6300A	8000A
Trip class	Class 10								
Setting range	65-125A		85-150A		100-240A		160-400A		400-800A

## MetaMec Coil Current Consumption for Meta-MEC Contactors

Part Number		GMC-100 GMC-125	GMC-150	GMC-180 GMC-220	GMC-300 GMC-400	GMC-600 GMC-800
Standard Voltages	50/60Hz/DC	24 - 600V				
Operating Voltage Limits	Pick-up	70 - 85%				
	Drop-out	40 - 60%				
Coil Consumption	Inrush (VA)	298	298	380	571	1000
	Sealed (VA)	12.3	12.3	11.6	14	29
Thermal Dissipation	AC (W)	4.4	4.4	4.7	4.7	5.3
	DC (W)	4.4	4.4	4.7	5.0	7.8



## Meta-MEC Contactor and Overload Dimensions

Contactor	A	B	C	D
GMC-100	3.94" (100mm)	5.77" (146.5mm)	6.53" (165.8mm)	9.11" (231.4mm)
GMC-125	3.94" (100mm)	5.77" (146.5mm)	6.53" (165.8mm)	9.11" (231.4mm)
GMC-150	4.72" (120mm)	6.18" (157mm)	6.92" (175.8mm)	10.25" (260.4mm)
GMC-180	5.43" (138mm)	7.13" (181mm)	7.99" (203mm)	12.07" (306.5mm)
GMC-220	5.43" (138mm)	7.13" (181mm)	7.99" (203mm)	12.07" (306.5mm)
GMC-300	6.42" (163mm)	7.80" (198mm)	9.57" (243mm)	14.96" (380mm)
GMC-400	6.42" (163mm)	7.80" (198mm)	9.57" (243mm)	14.96" (380mm)
GMC-600	14.17" (360mm)	4.63" (117.7mm)	12.28" (312mm)	20.87" (530mm)
GMC-800	14.17" (360mm)	4.63" (117.7mm)	12.28" (312mm)	20.87" (530mm)