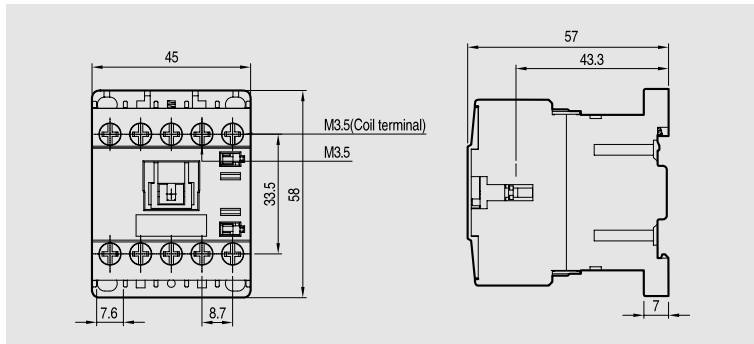


Dimensions

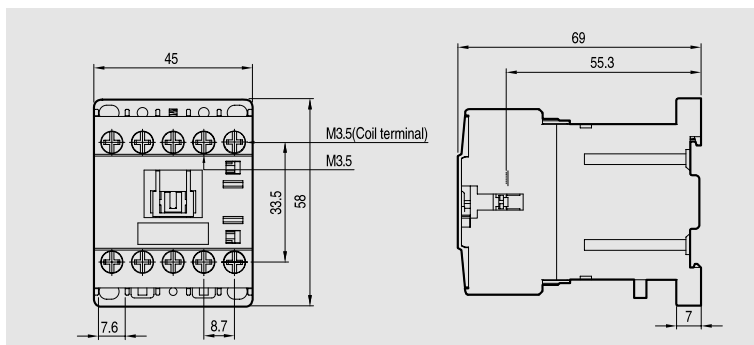
Mini contactors (Screw clamp type)

- GMC-6M
- GMC-9M
- GMC-12M
- GMC-16M
- GMC-6M/4
- GMC-9M/4
- GMC-12M/4
- GMC-16M/4



0.17kg

- GMD-6M
- GMD-9M
- GMD-12M
- GMD-16M
- GMD-6M/4
- GMD-9M/4
- GMD-12M/4
- GMD-16M/4

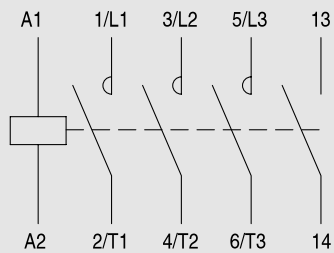


0.23kg

Circuit diagram

GMC-6M~16M, GMD-6M~16M

3-Pole contactors



GMC-6M/4~16M/4, GMD-6M/4~16M/4

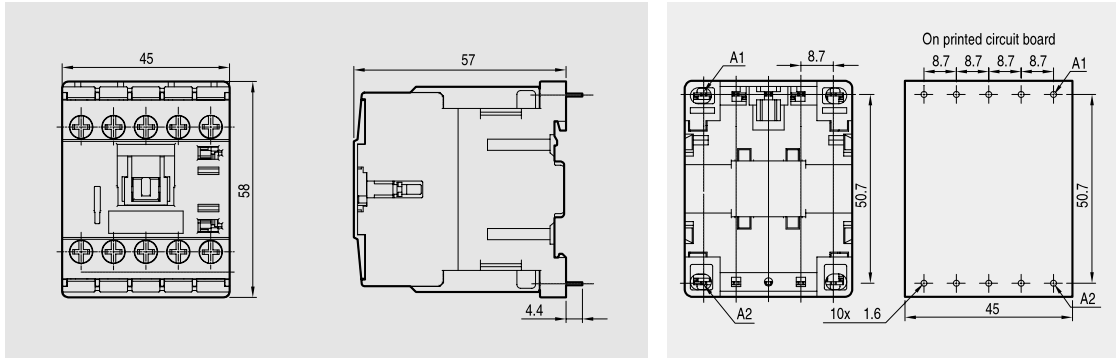
4-Pole contactors



Mini contactors (Solder pin type)

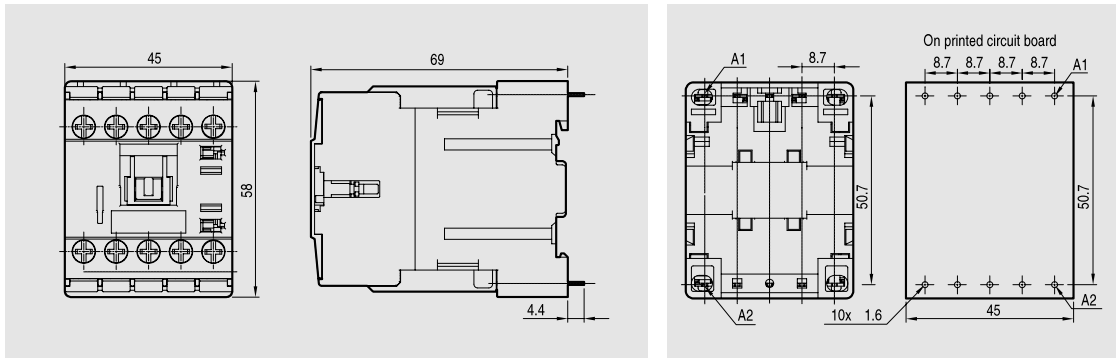


- GMC-6MP
- GMC-9MP
- GMC-12MP
- GMC-16MP
- GMC-6MP/4
- GMC-9MP/4
- GMC-12MP/4
- GMC-16MP/4



0.17kg

- GMD-6MP
- GMD-9MP
- GMD-12MP
- GMD-16MP
- GMD-6MP/4
- GMD-9MP/4
- GMD-12MP/4
- GMD-16MP/4

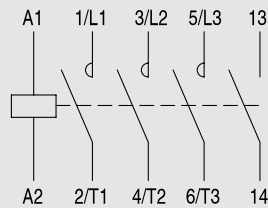


0.23kg

Circuit diagram

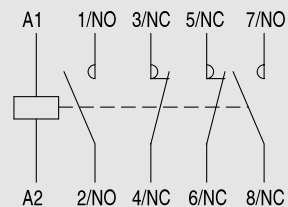
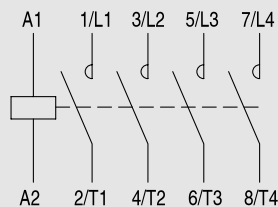
GMC-6MP~16MP, GMD-6MP~16MP

3-Pole contactors



GMC-6MP/4~16MP/4, GMD-6MP/4~16MP/4

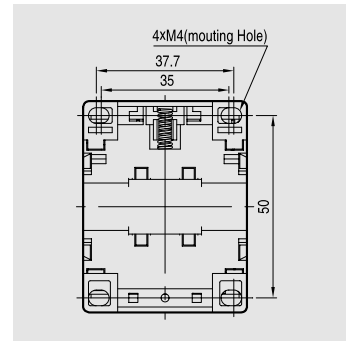
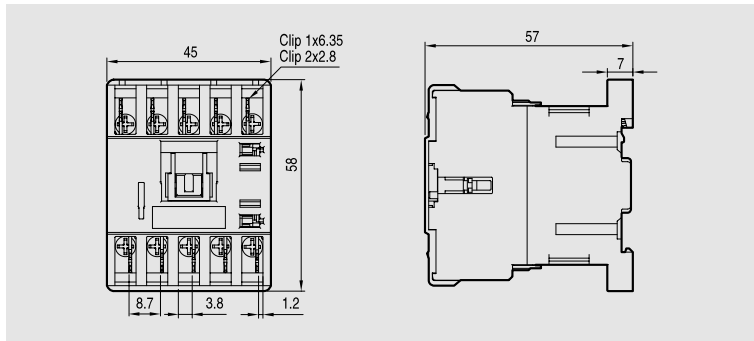
4-Pole contactors



Dimensions

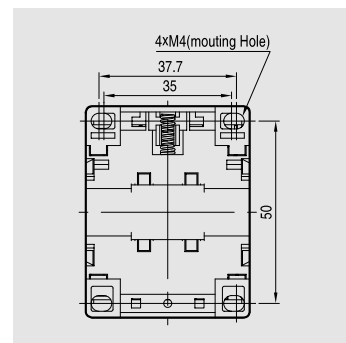
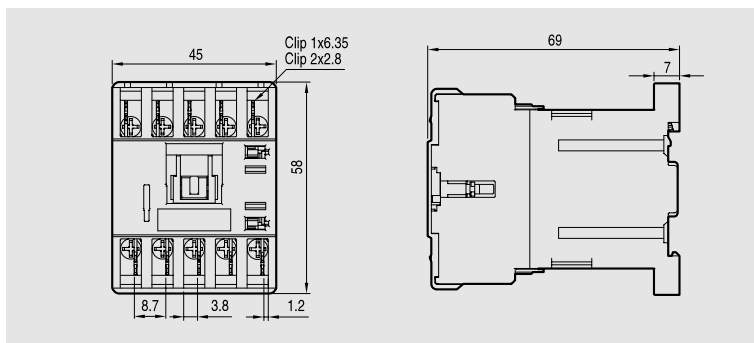
Mini contactors (Fast-on type)

- GMC-6MF
- GMC-9MF
- GMC-12MF
- GMC-16MF
- GMC-6MF/4
- GMC-9MF/4
- GMC-12MF/4
- GMC-16MF/4



0.18kg

- GMD-6MF
- GMD-9MF
- GMD-12MF
- GMD-16MF
- GMD-6MF/4
- GMD-9MF/4
- GMD-12MF/4
- GMD-16MF/4

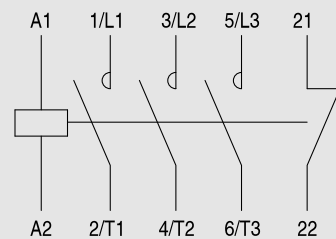
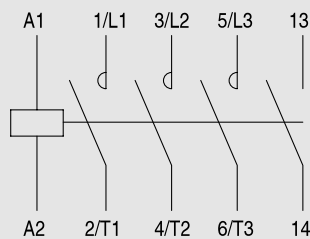


0.27kg

Circuit diagram

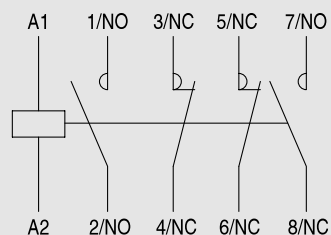
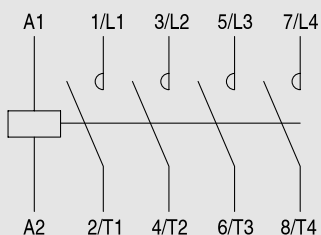
GMC-6MF~16MF, GMD-6MF~16MF

3-Pole contactors



GMC-6MF/4~16MF/4, GMD-6MF/4~16MF/4

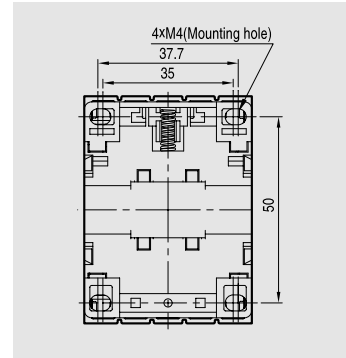
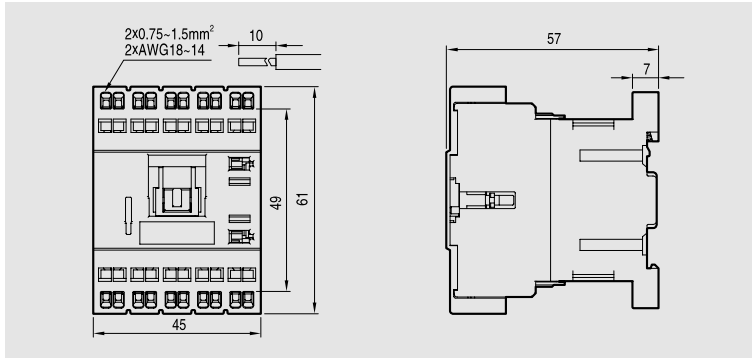
4-Pole contactors



Mini contactors (Cage clamp type)

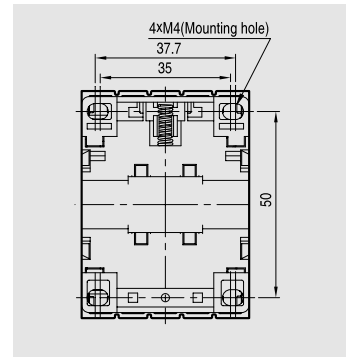
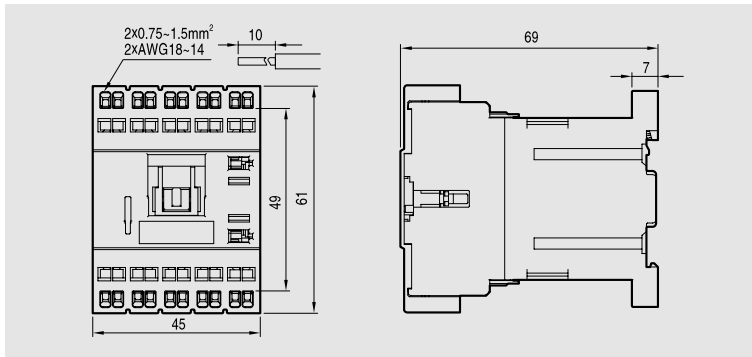


- GMC-6MC
- GMC-9MC
- GMC-12MC
- GMC-16MC
- GMC-6MC/4
- GMC-9MC/4
- GMC-12MC/4
- GMC-16MC/4



0.19kg

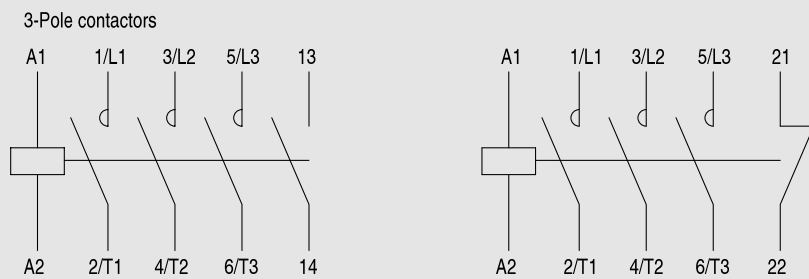
- GMD-6MC
- GMD-9MC
- GMD-12MC
- GMD-16MC
- GMD-6MC/4
- GMD-9MC/4
- GMD-12MC/4
- GMD-16MC/4



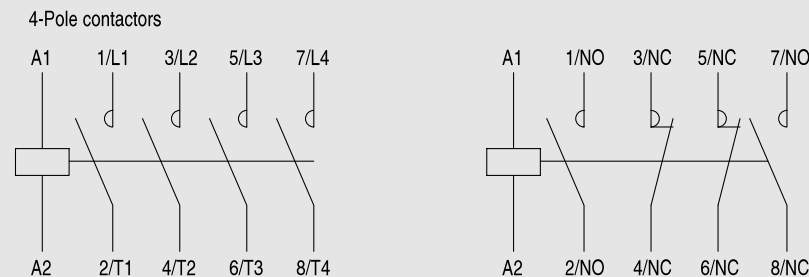
0.28kg

Circuit diagram

GMC-6MC~16MC, GMD-6MC~16MC



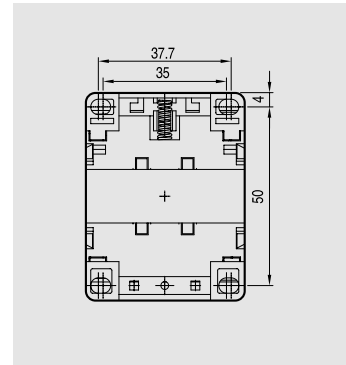
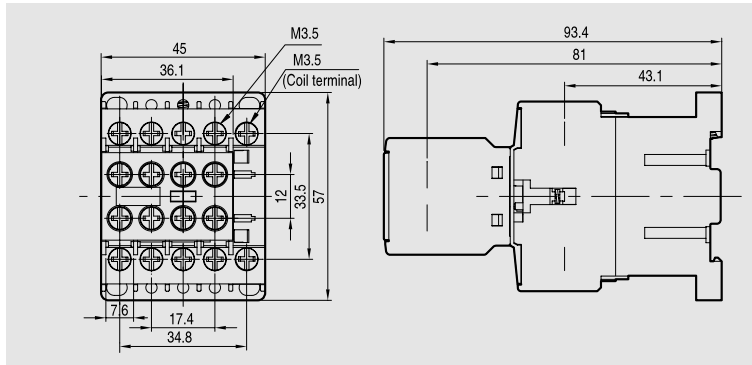
GMC-6MC/4~16MC/4, GMD-6MC/4~16MC/4



Dimensions

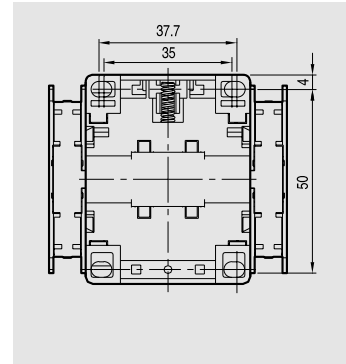
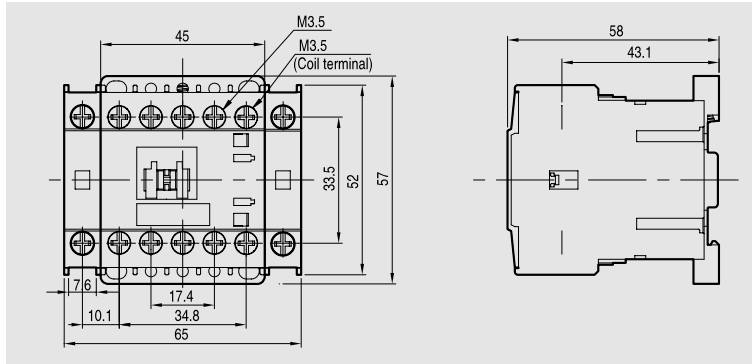
Mini contactors with Auxiliary contacts

- GMC-6M
- GMC-9M
- GMC-12M
- GMC-16M
- +
- AU-4M



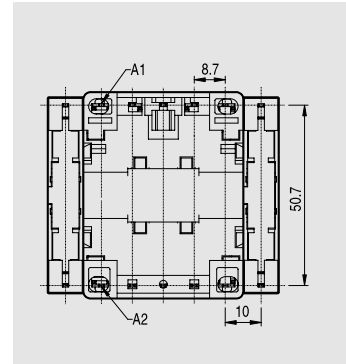
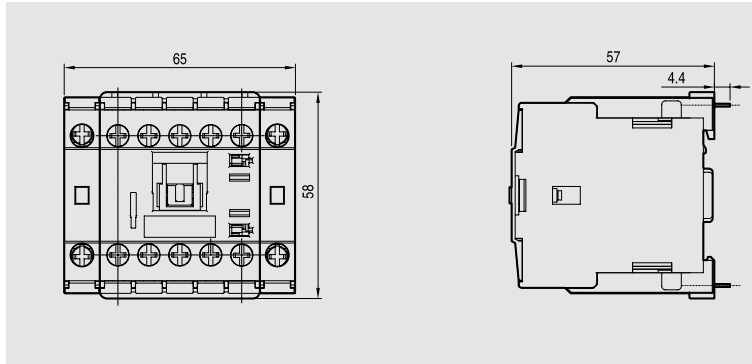
0.21kg

- GMC-6M
- GMC-9M
- GMC-12M
- GMC-16M
- +
- 2 × AU-1M

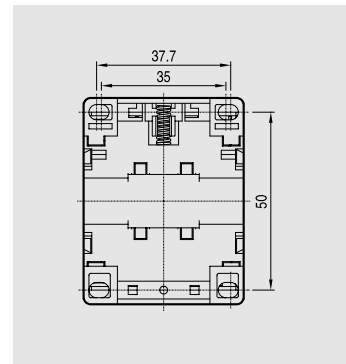
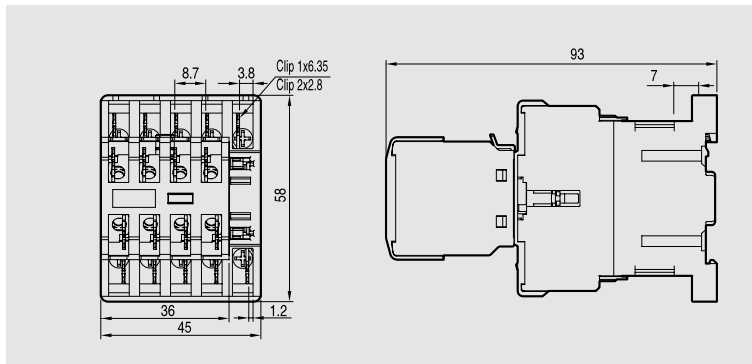


0.21kg

- GMC-6MP
- GMC-9MP
- GMC-12MP
- GMC-16MP
- +
- 2 × AU-1MP

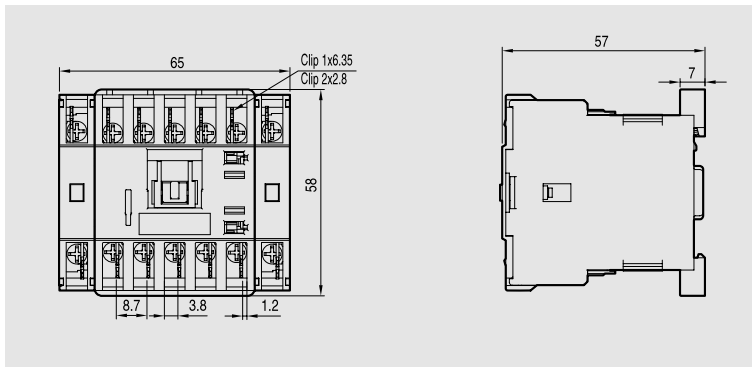


- GMC-6MF
- GMC-9MF
- GMC-12MF
- GMC-16MF
- +
- AU-4MF



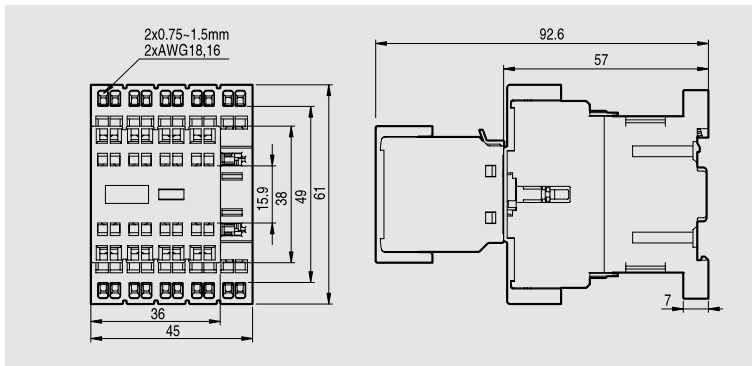
0.23kg

- GMC-6MF
- GMC-9MF
- GMC-12MF
- GMC-16MF
- +
- 2 × AU-1MF



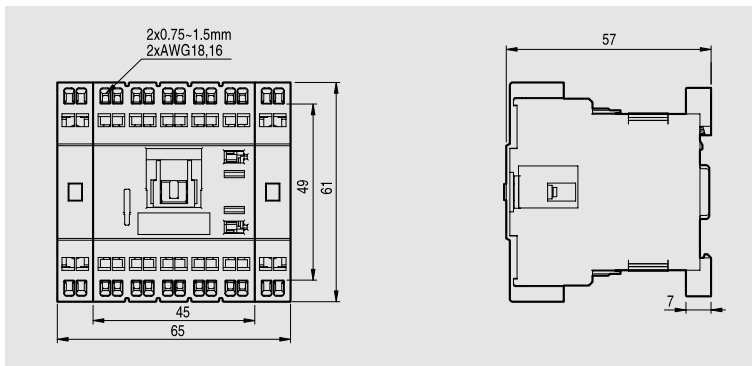
0.32kg

- GMC-6MC
- GMC-9MC
- GMC-12MC
- GMC-16MC
- +
- AU-4MC



0.24kg

- GMC-6MC
- GMC-9MC
- GMC-12MC
- GMC-16MC
- +
- 2 × AU-1MC

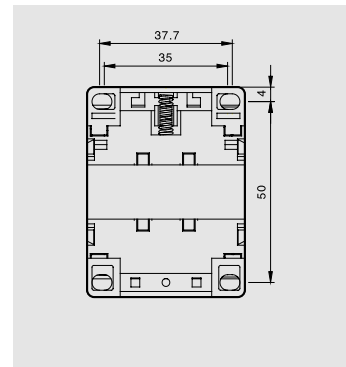
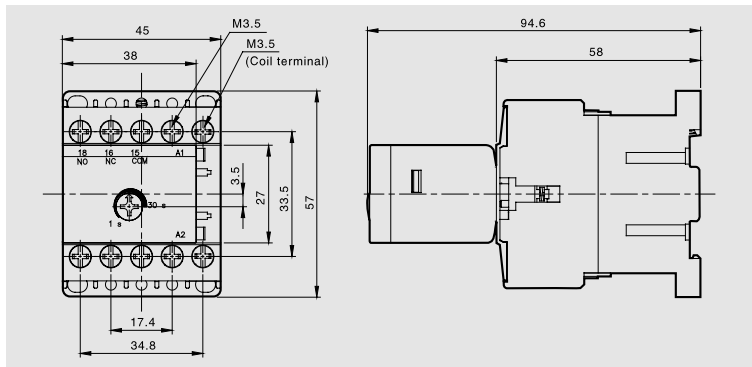


0.23kg

Dimensions

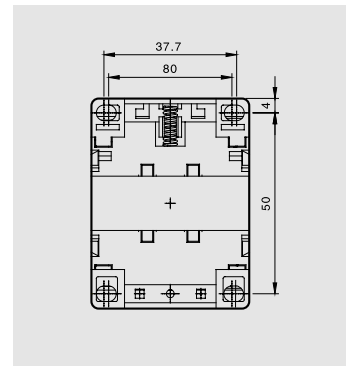
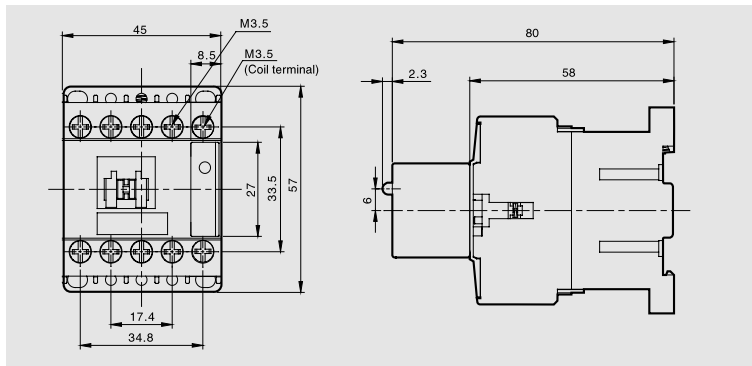
Mini contactors with external accessories

- GMC-6M
- GMC-9M
- GMC-12M
- GMC-16M
- +
- AT-12M



0.21kg

- GMD-6M
- GMD-9M
- GMD-12M
- GMD-16M
- +
- AS-12M

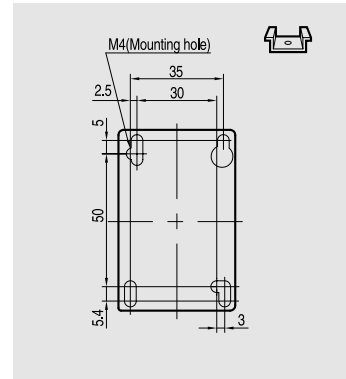
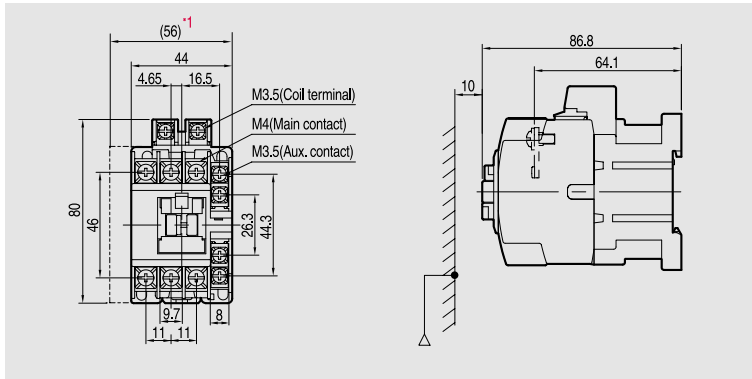


0.175kg

3-pole Contactors / AC coil



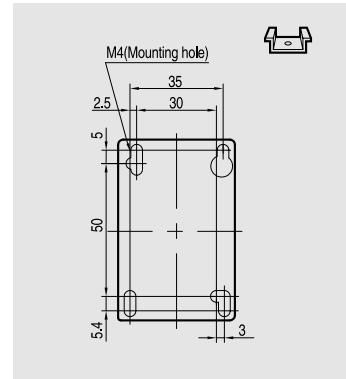
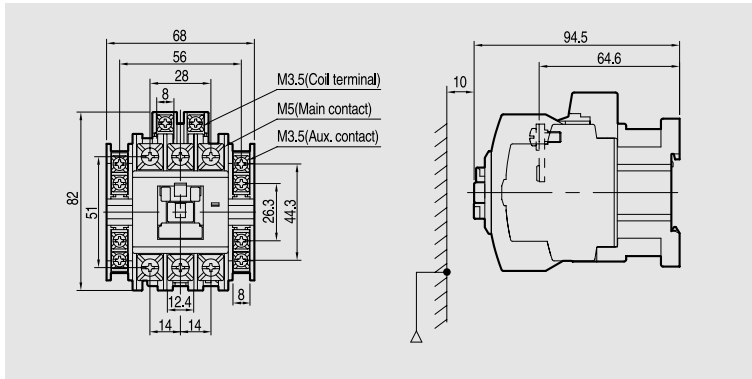
- GMC-9
- GMC-12
- GMC-18
- GMC-22



* 1 : Optional auxiliary contact unit (side mount type)

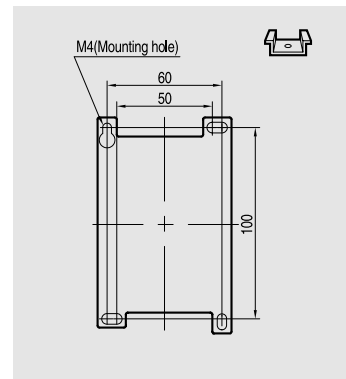
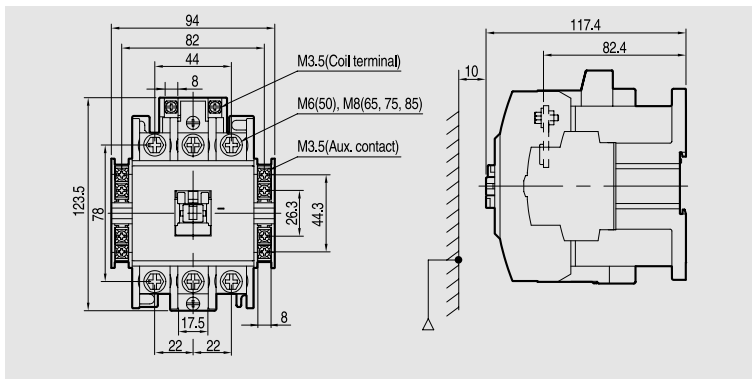
GMC-9,12:0.33kg
GMC-18,22:0.37kg

- GMC-32
- GMC-40



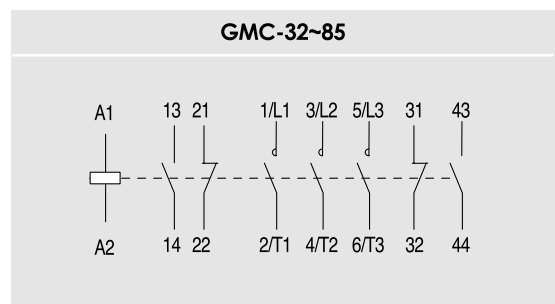
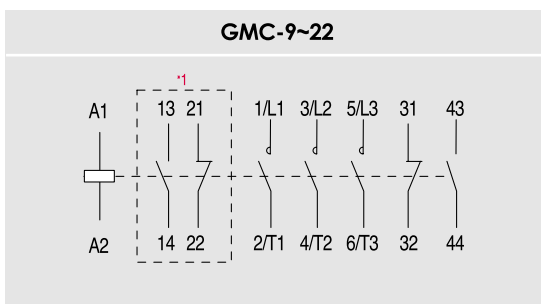
0.45kg

- GMC-50
- GMC-65
- GMC-75
- GMC-85



1kg

Circuit diagram

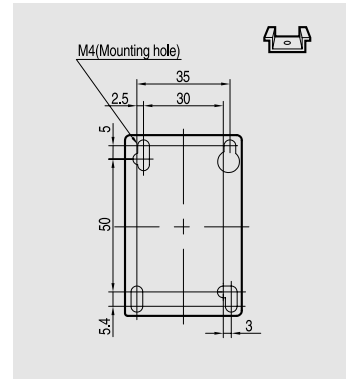
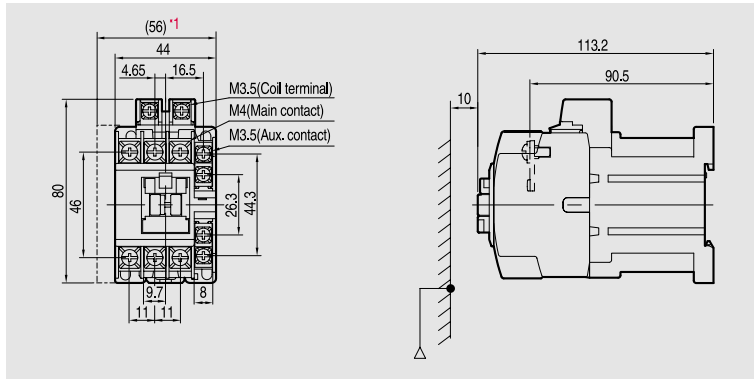


* 1 : Optional auxiliary contact unit

Dimensions

3-pole Contactors / DC coil

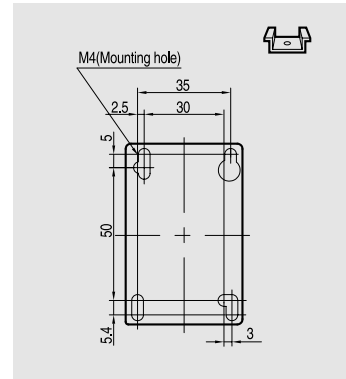
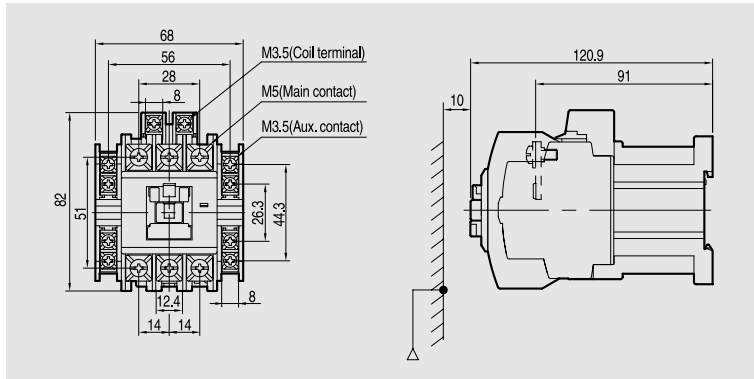
- GMD-9
- GMD-12
- GMD-18
- GMD-22



* 1 : Optional auxiliary contact unit (side mount type)

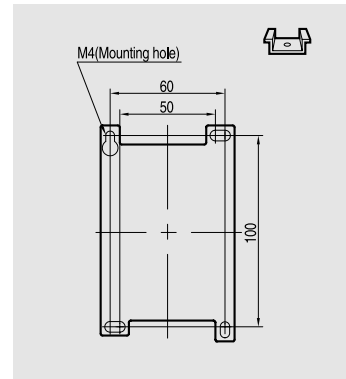
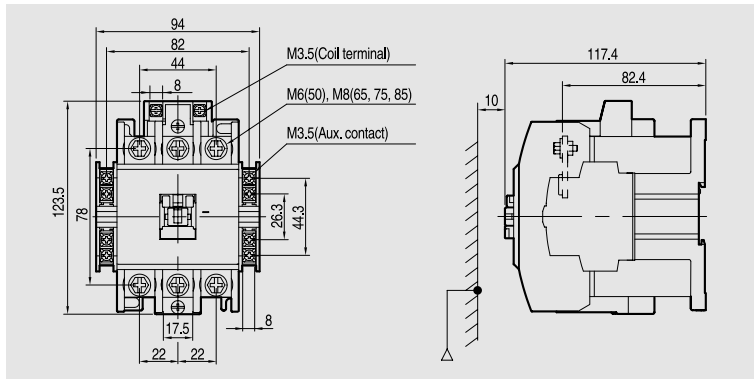
GMD-9,12:0.55kg
GMD-18,22:0.59kg

- GMD-32
- GMD-40



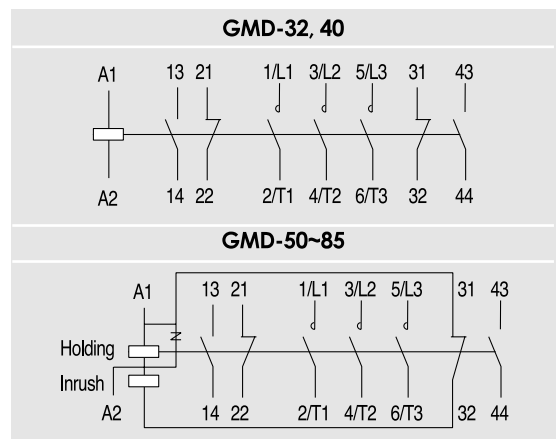
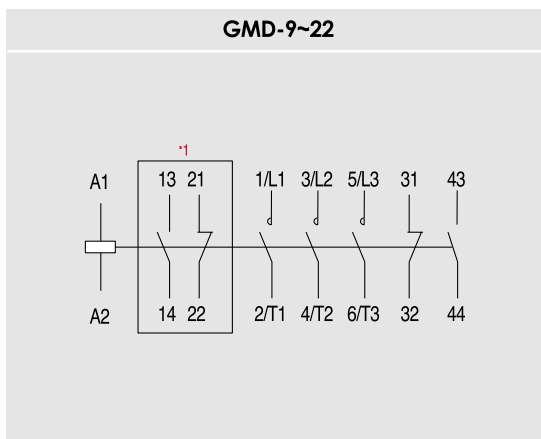
0.67kg

- GMD-50
- GMD-65
- GMD-75
- GMD-85



1.06kg

Circuit diagram

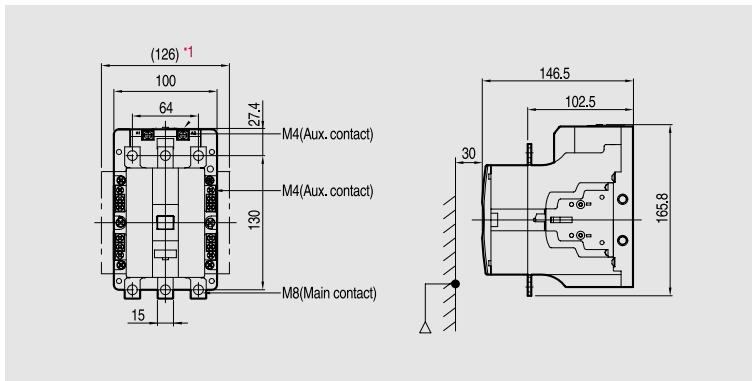


* 1 : Optional auxiliary contact unit

3-pole Contactors / AC coil

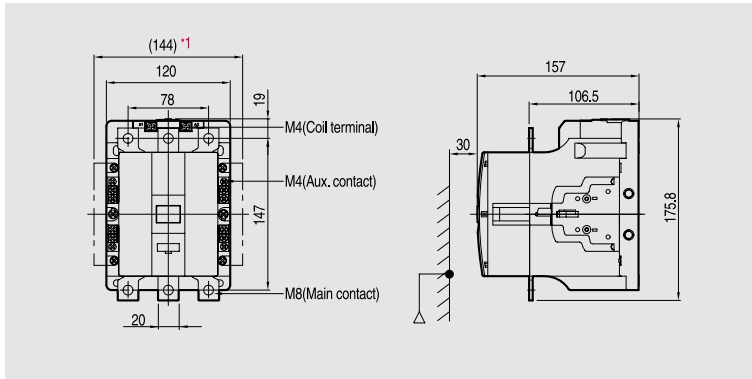


GMC-100
GMC-125



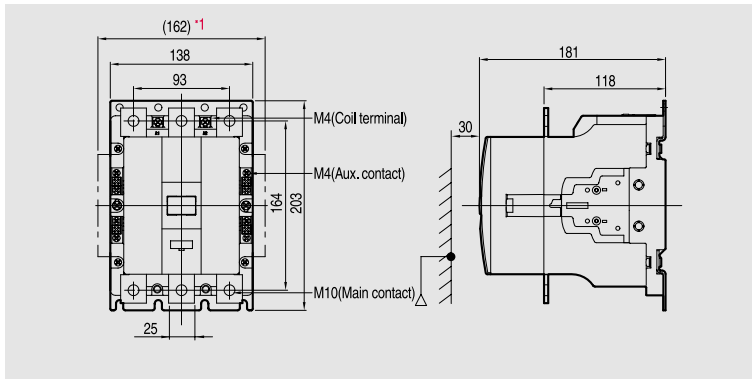
2.9kg

GMC-150



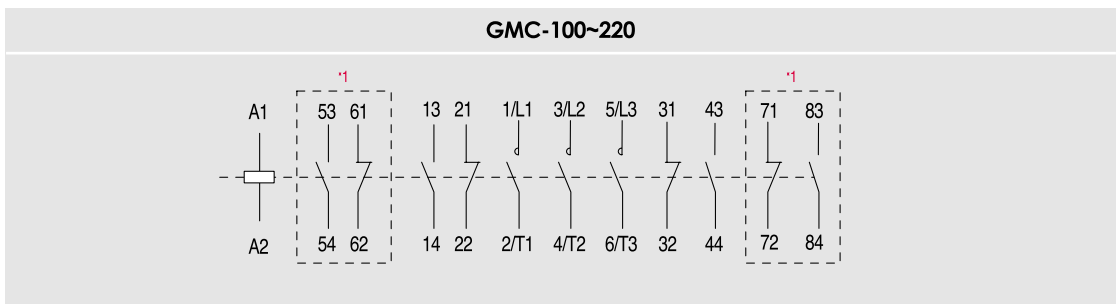
3.4kg

GMC-180
GMC-220



5.4kg

Circuit diagram



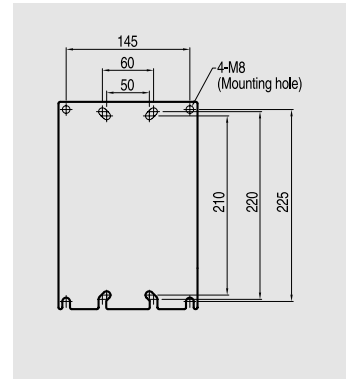
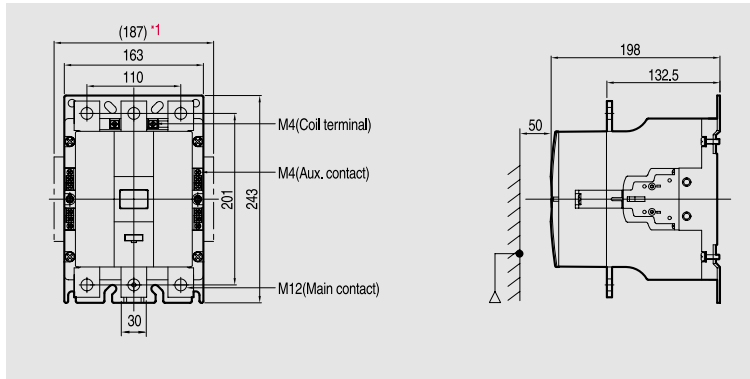
* 1 : Optional auxiliary contact unit (side mount type)

Dimensions

3-pole Contactors / AC coil

GMC-300

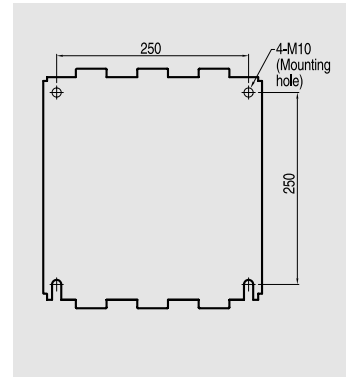
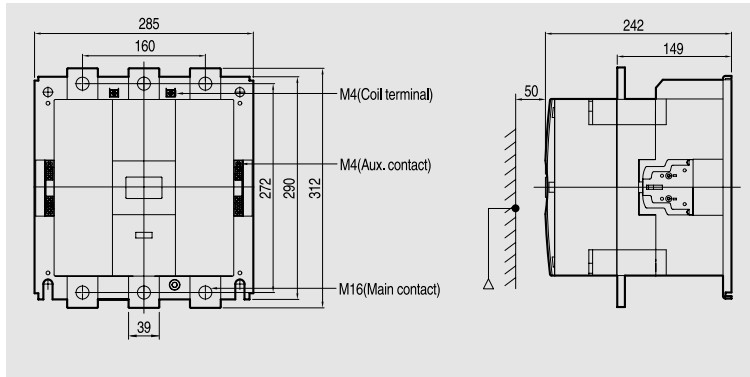
GMC-400



9.2kg

GMC-600

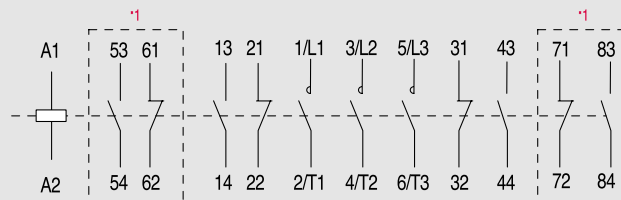
GMC-800



22.4kg

Circuit diagram

GMC-300~800

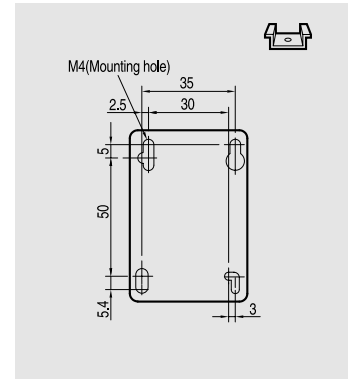
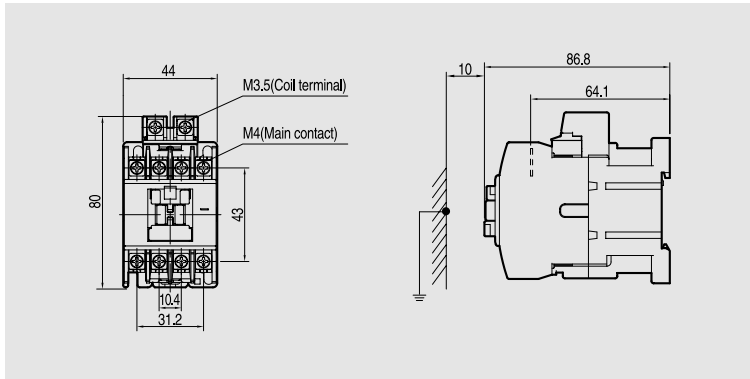


*1 : Optional auxiliary contact unit (side mount type)

4-pole Contactors / AC coil



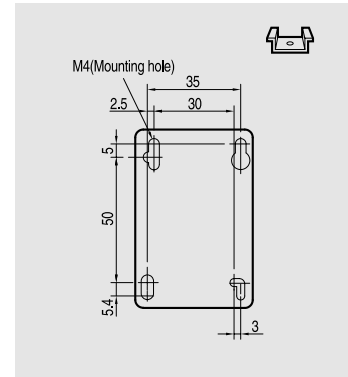
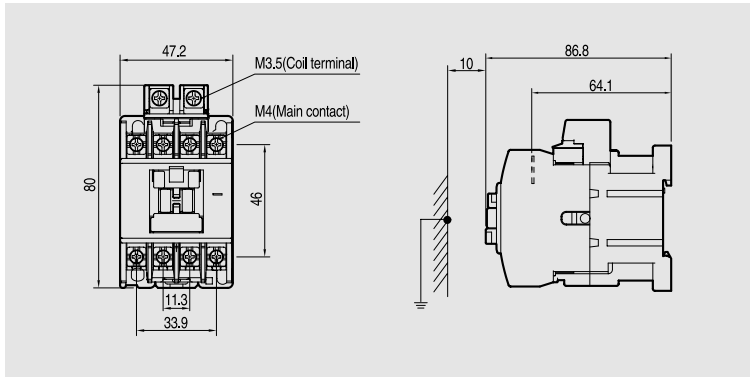
GMC-9/4
GMC-12/4



* 1 : Optional auxiliary contact unit (side mount type)

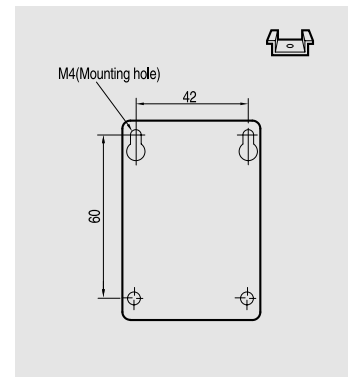
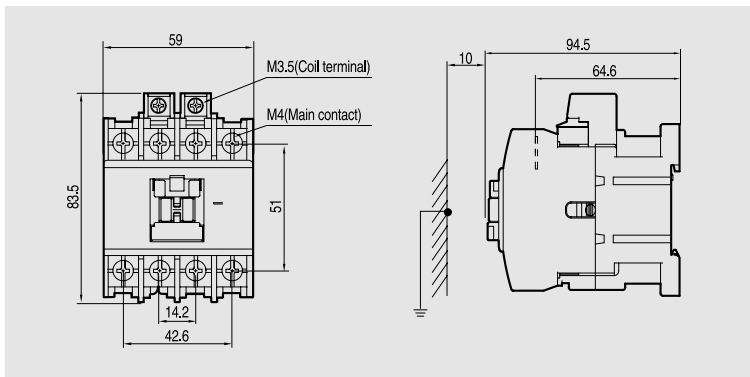
0.33kg

GMC-18/4
GMC-22/4



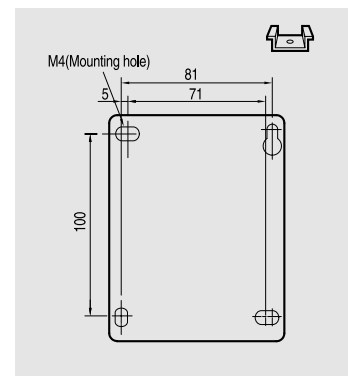
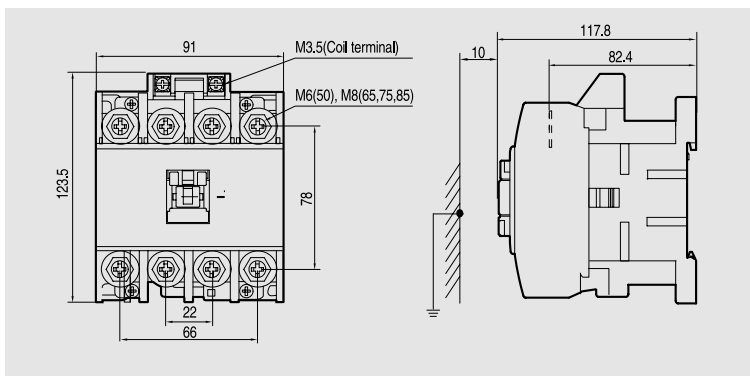
0.4kg

GMC-32/4
GMC-40/4



0.59kg

GMC-50/4
GMC-65/4
GMC-75/4
GMC-85/4



1.2kg

Dimensions

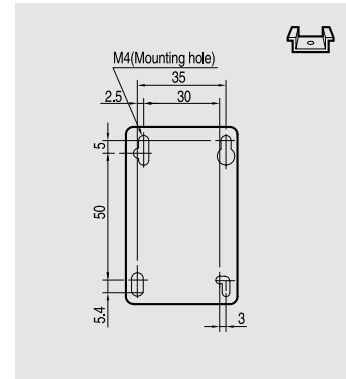
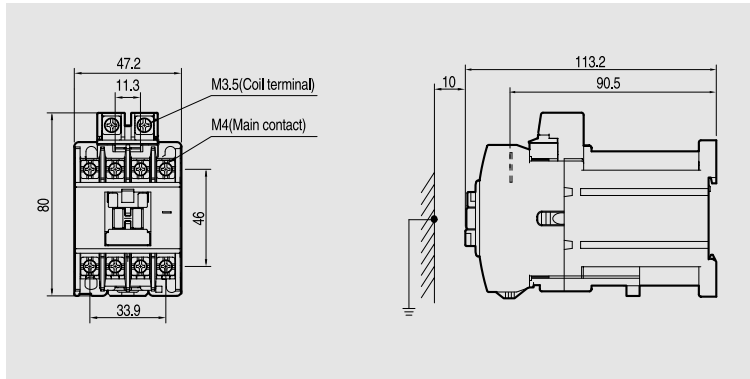
4-pole Contactors / DC coil

GMD-9/4

GMD-12/4

GMD-18/4

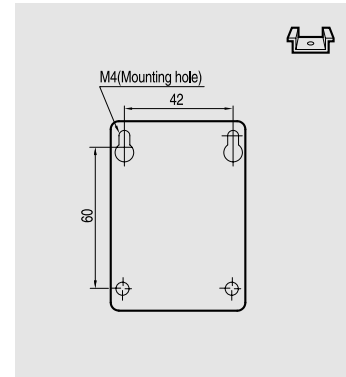
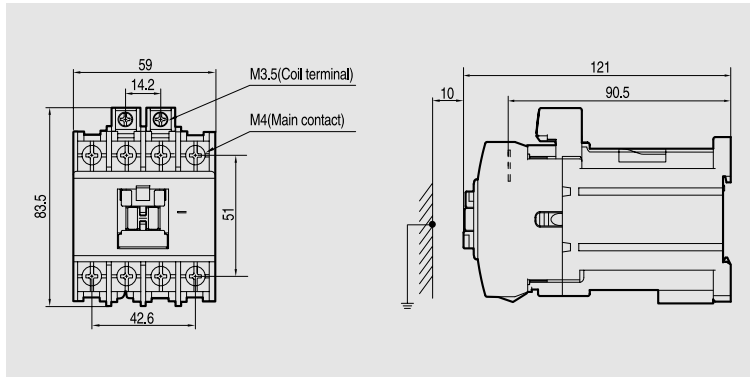
GMD-22/4



0.5kg

GMD-32/4

GMD-40/4



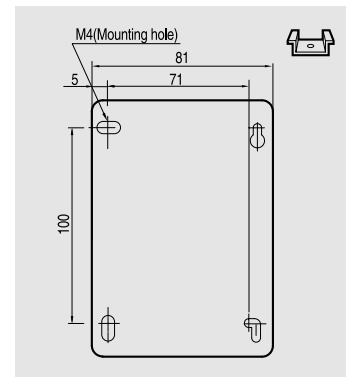
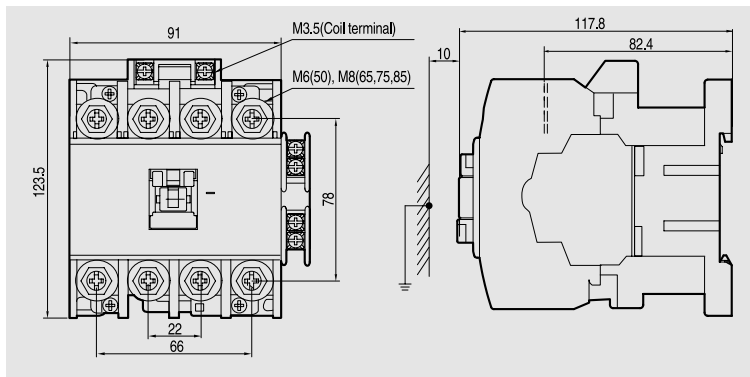
0.7kg

GMD-50/4

GMD-65/4

GMD-75/4

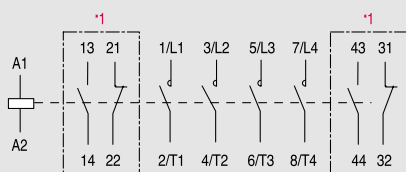
GMD-85/4



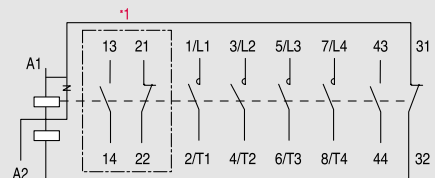
1.29kg

Circuit diagram

GMC-9/4-85/4, GMD-9/4-40/4



GMD-50/4-85/4

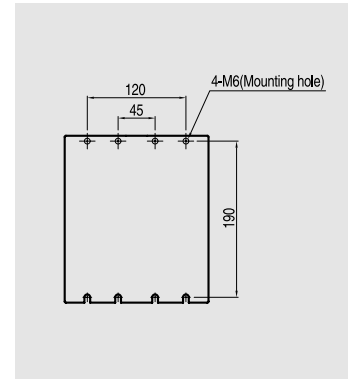
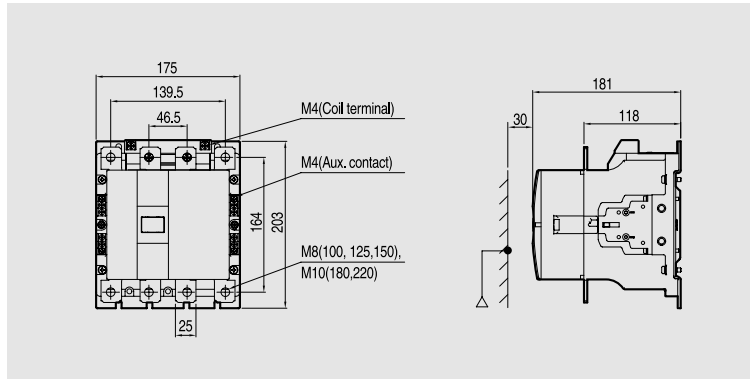


*1, *2: Optional auxiliary contact unit

4-pole Contactors / AC coil

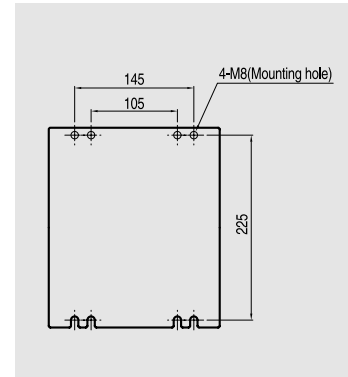
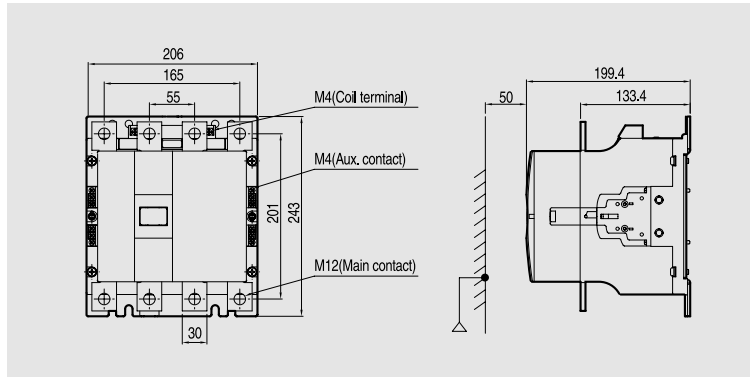


- GMC-100/4
- GMC-125/4
- GMC-150/4
- GMC-180/4
- GMC-220/4



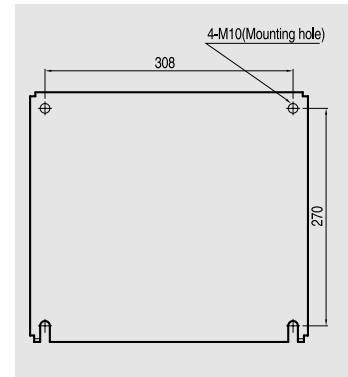
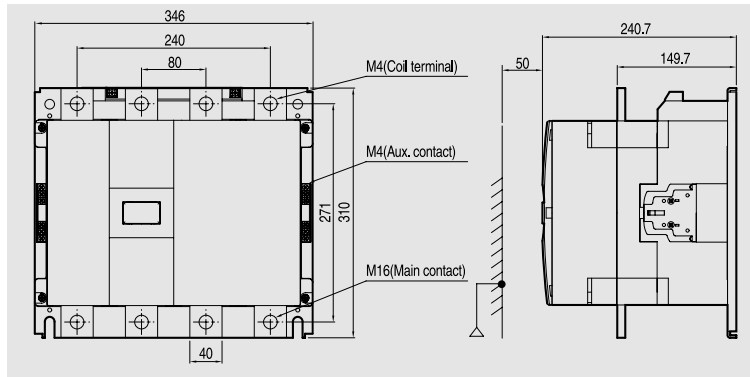
5.6kg

- GMC-300/4
- GMC-400/4



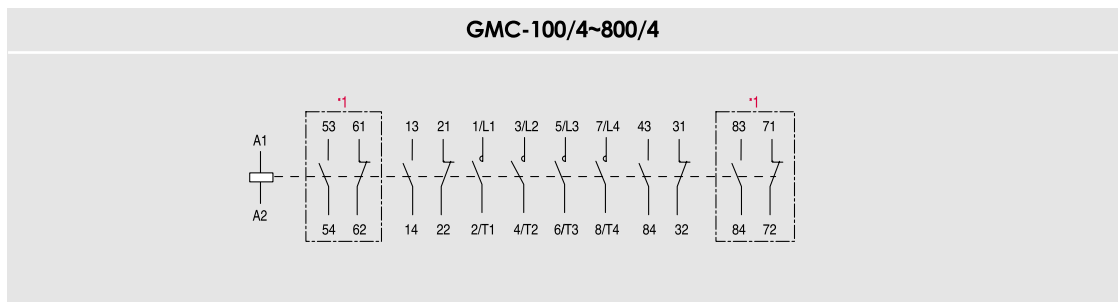
9.9kg

- GMC-600/4
- GMC-800/4



26.3kg

Circuit diagram

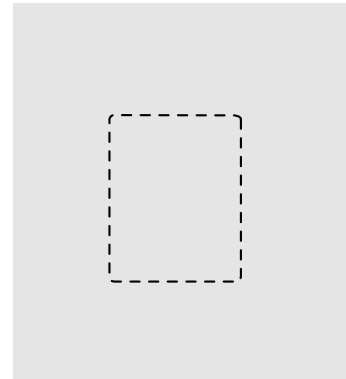
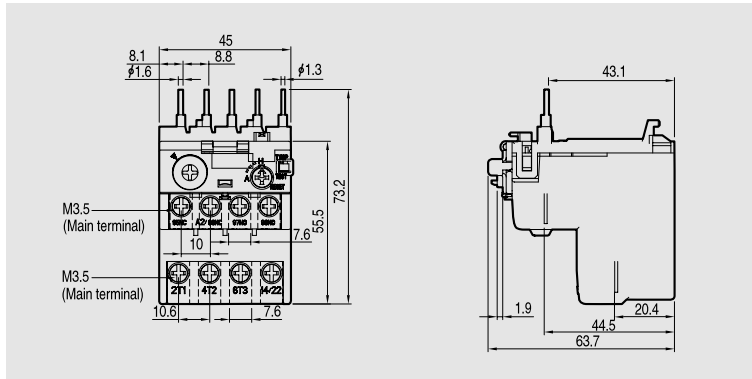


* 1 : Optional auxiliary contact unit (side mount type)

Dimensions

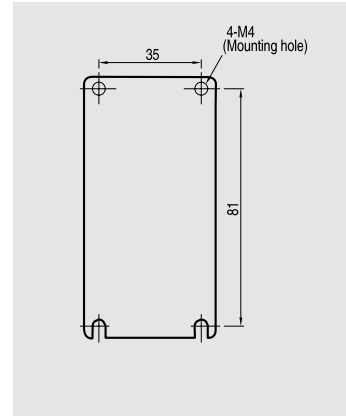
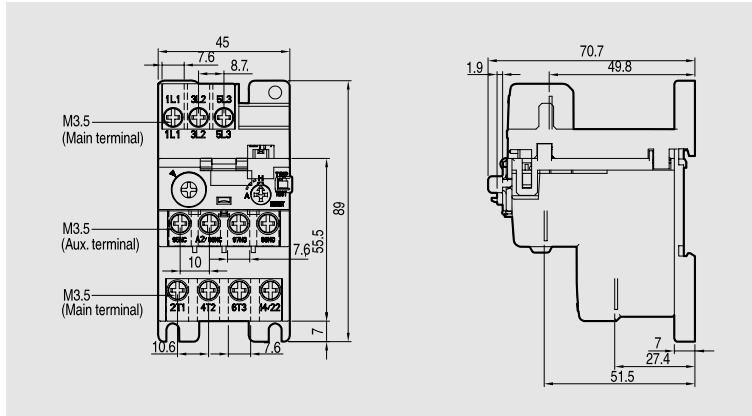
Thermal overload relays for Mini contactors

GTH(K)-12M



0.1kg

GTH(K)-12MH

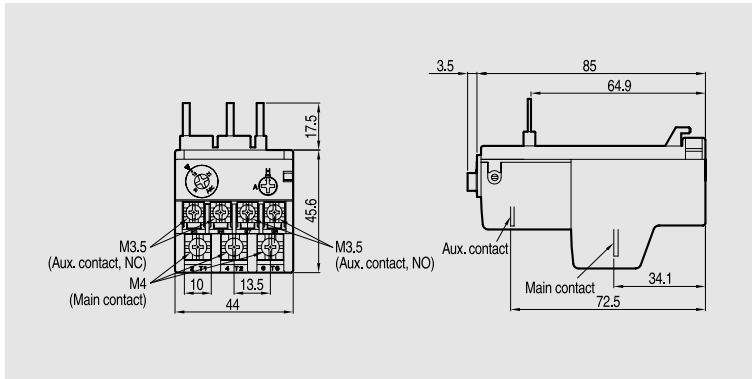


0.4kg

Thermal overload relays (Class 10A)



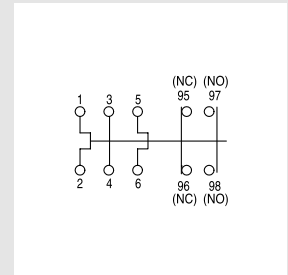
- GTH-22
- GTK-22
- GTH-22/3



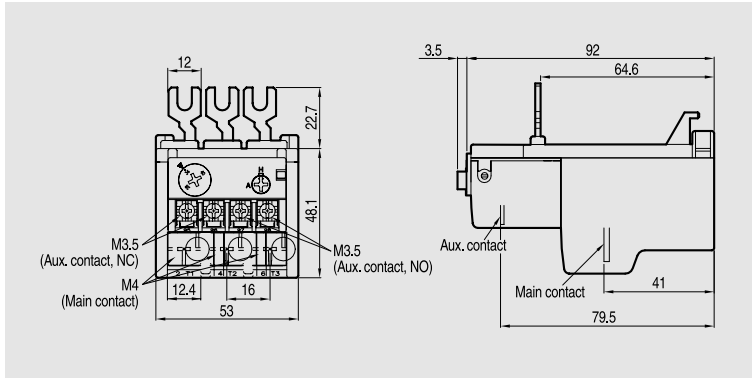
0.11kg

Diagrams

GTH-22, 40, 85
(2 heater types)

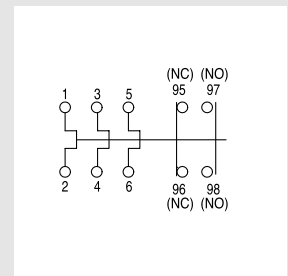


- GTH-40
- GTK-40
- GTH-40/3

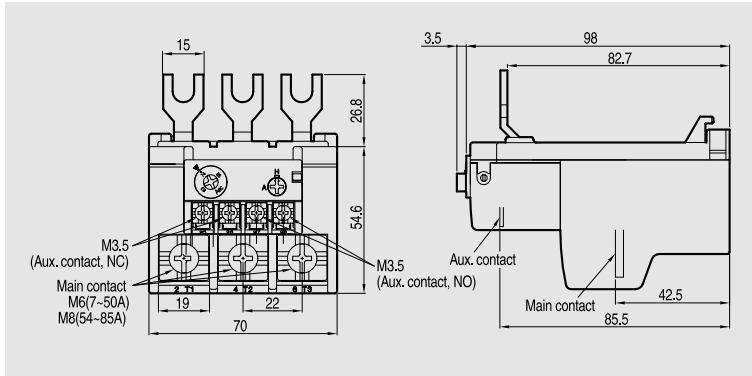


0.17kg

GTH-22/3, 40/3, 85/3
GTK-22, 40, 85
(3 heater types)



- GTH-85
- GTK-85
- GTH-85/3

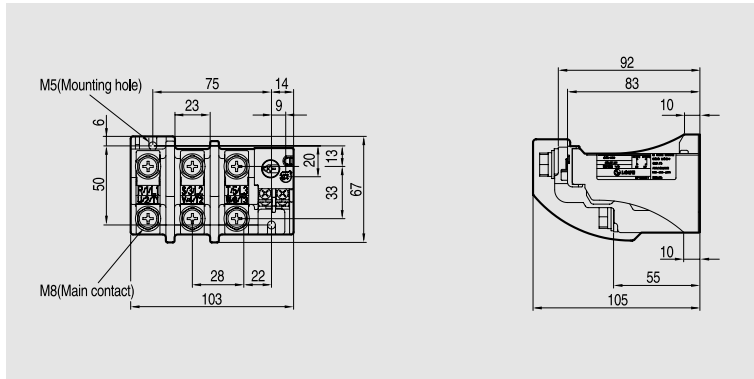


0.3kg

Dimensions

Thermal overload relays (Class 10A)

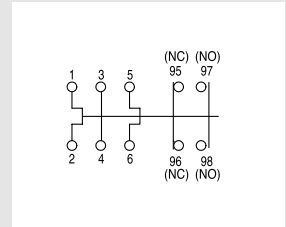
- GTH-100
- GTK-100
- GTH-100/3



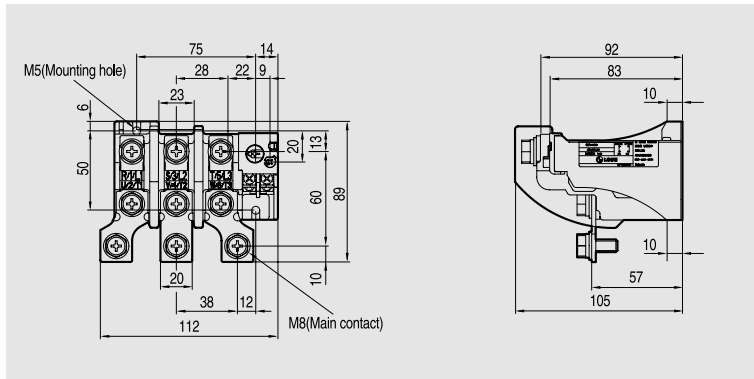
0.48kg

Diagrams

**GTH-100, 150
(2 heater types)**

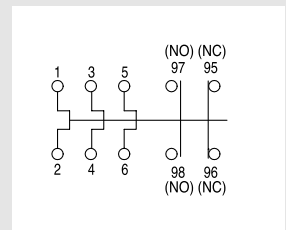


- GTH-150
- GTK-150
- GTH-150/3

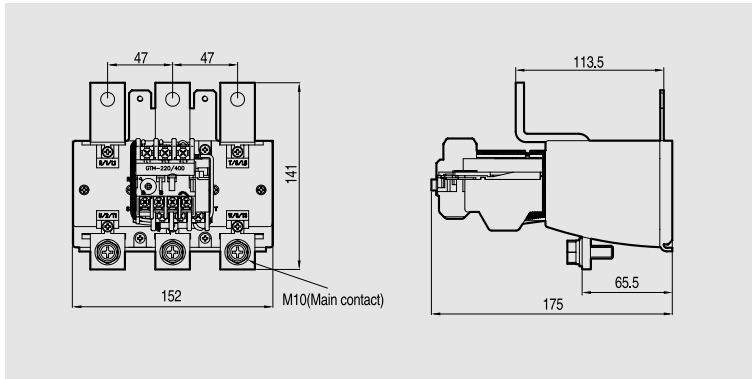


0.6kg

**GTH-100/3, 150/3
GTK-100, 150
(3 heater types)**

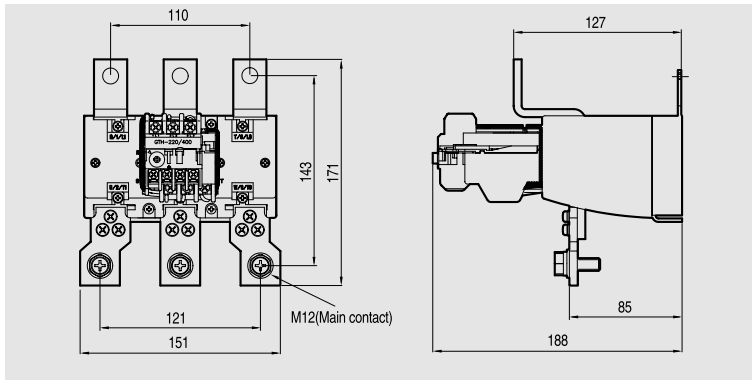


- GTH-220
- GTK-220
- GTH-220/3



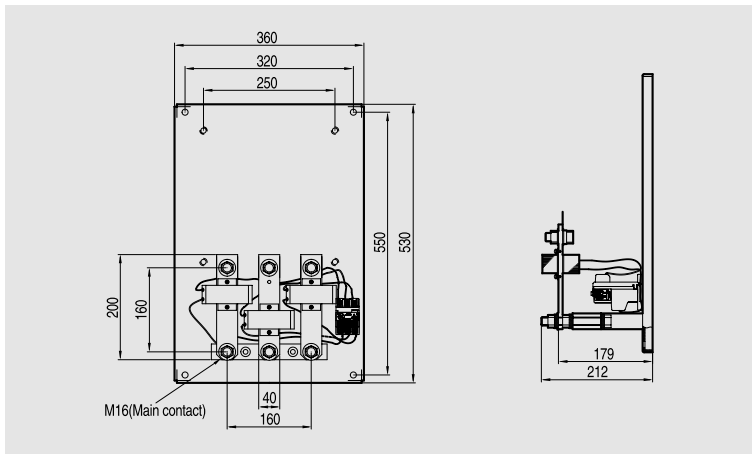
2.5kg

- GTH-400
- GTK-400
- GTH-400/3



2.6kg

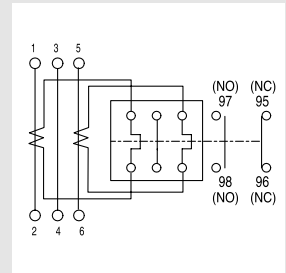
- GTH-600
- GTK-600
- GTH-600/3



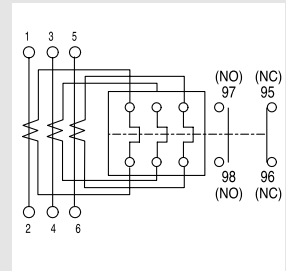
11.5kg

Diagrams

GTH- 220, 400, 600
(2 heater types)



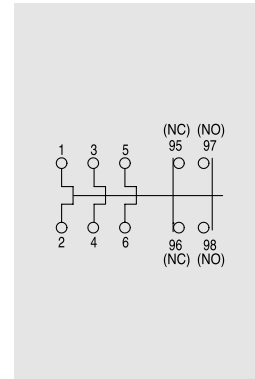
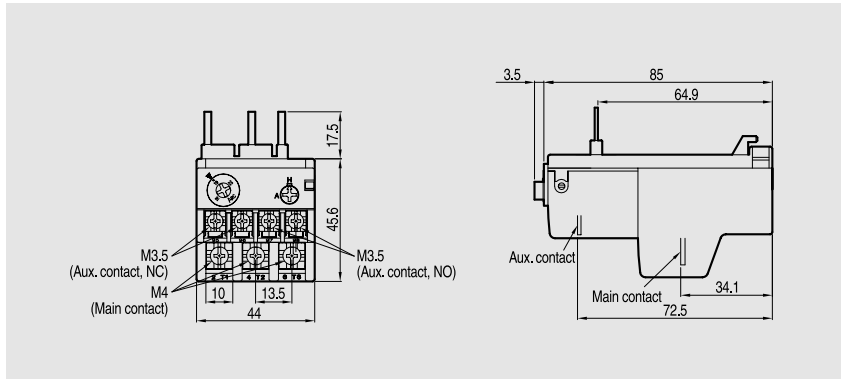
GTH-220/3, 400/3, 600/3
GTK-220, 400, 600
(3 heater types)



Dimensions

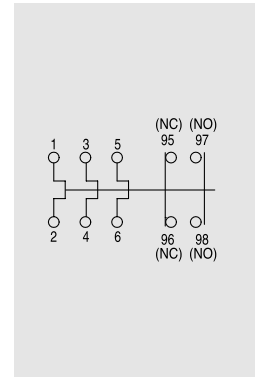
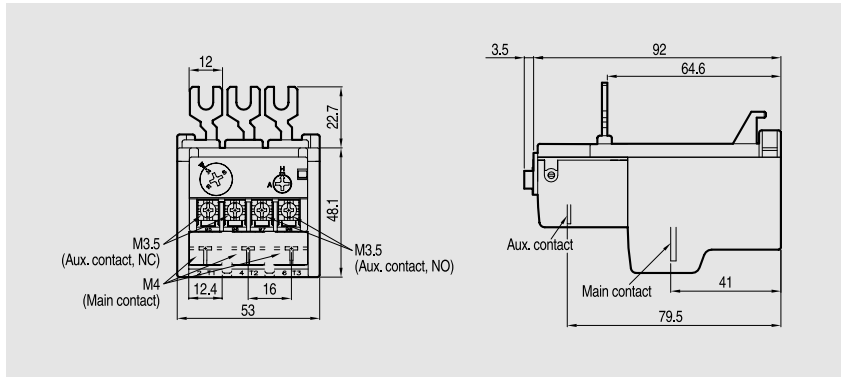
Thermal overload relays (Class 20)

GTK-22/L



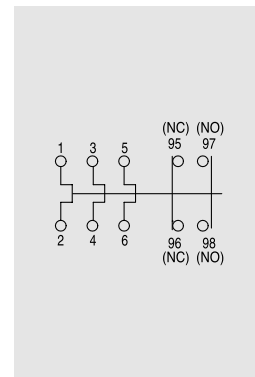
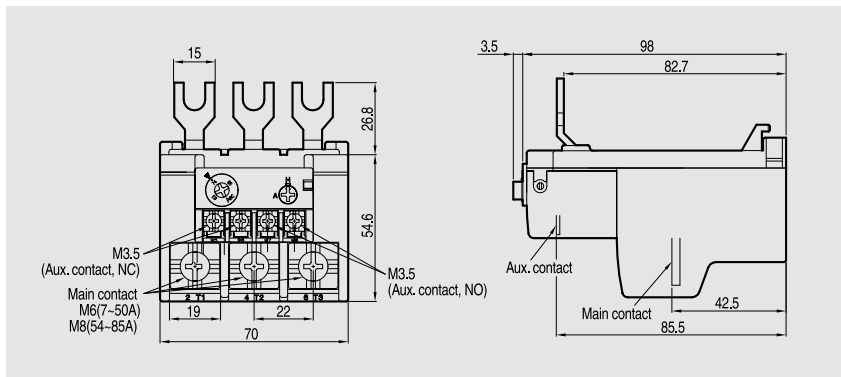
0.11Kg

GTK-40/L



0.17Kg

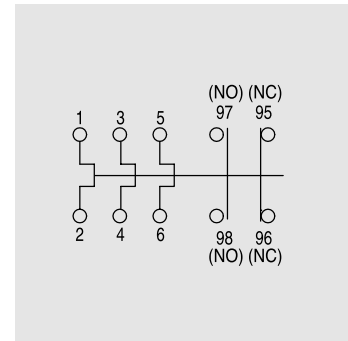
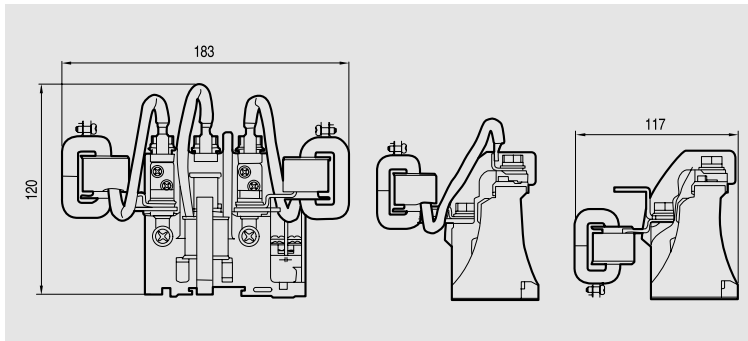
GTK-85/L



0.3Kg

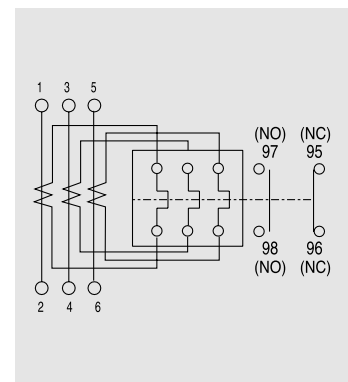
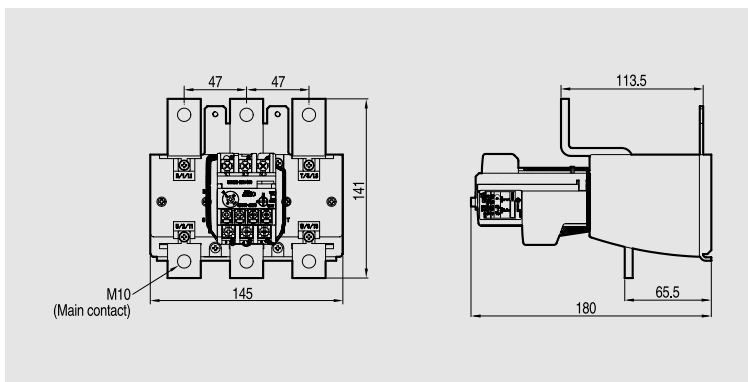
GTK-100/L

GTK-150/L



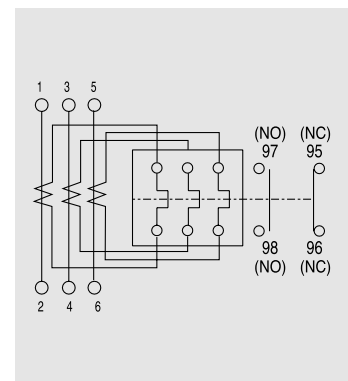
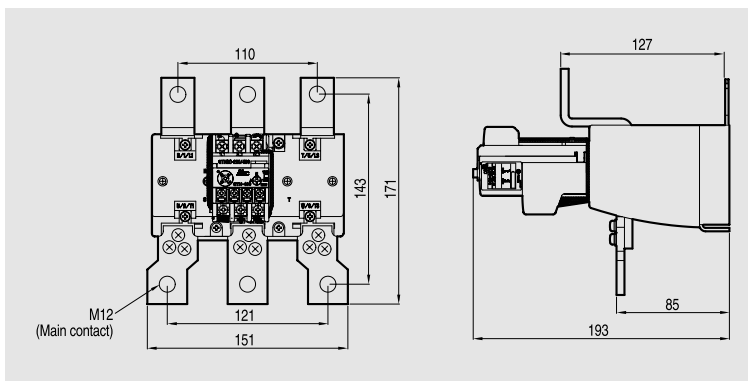
0.8Kg

GTK-220/L



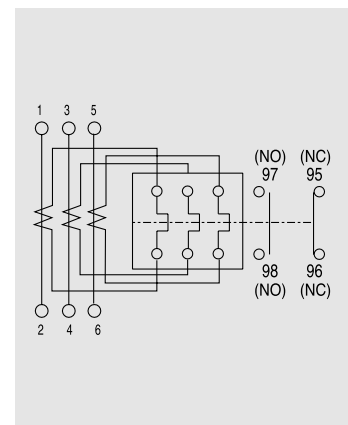
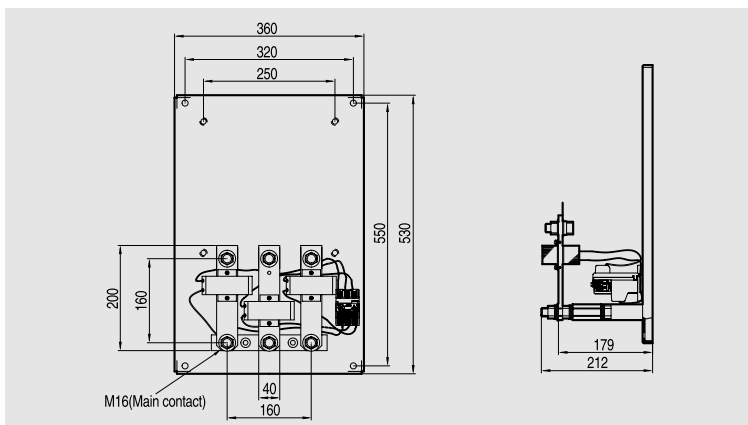
2.5Kg

GTK-400/L



2.6Kg

GTK-600/L



11.5Kg

Dimensions

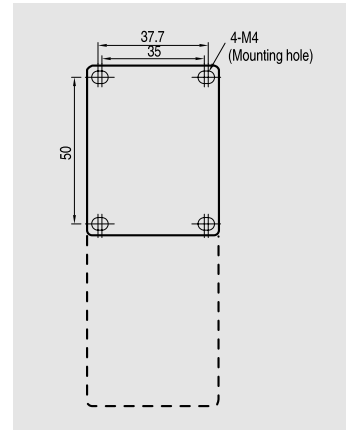
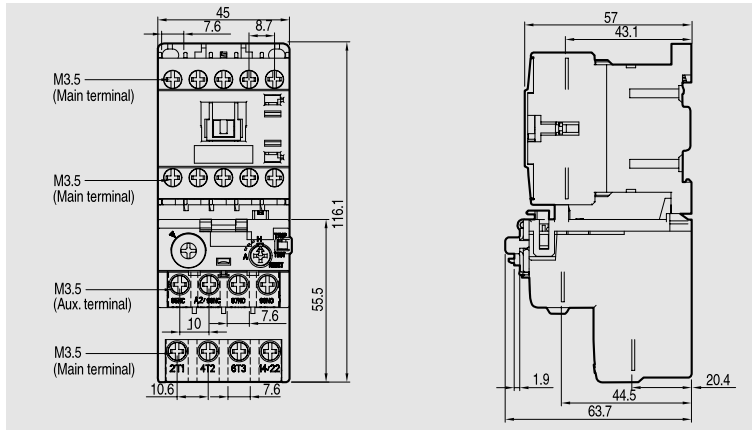
Mini motor starters, open

GMS-6M

GMS-9M

GMS-12M

GMS-16M



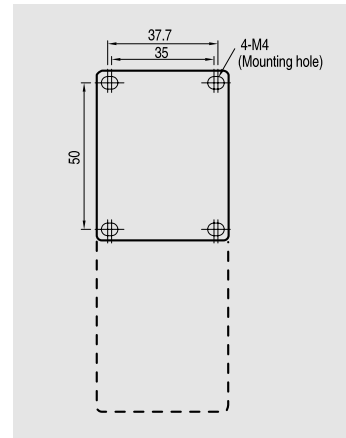
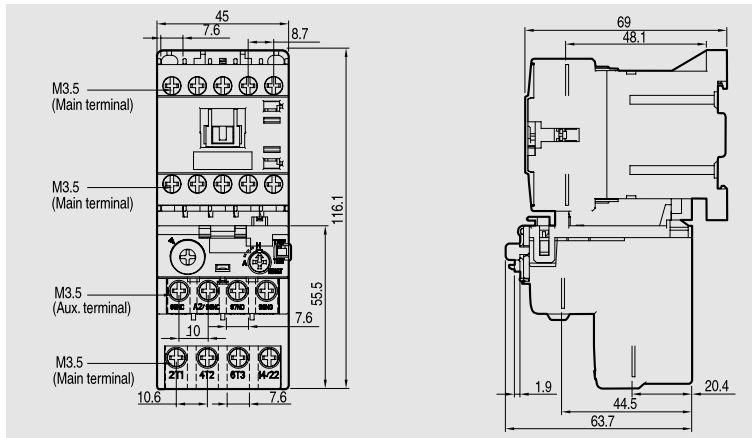
0.26kg

GMS-6MD

GMS-9MD

GMS-12MD

GMS-16MD

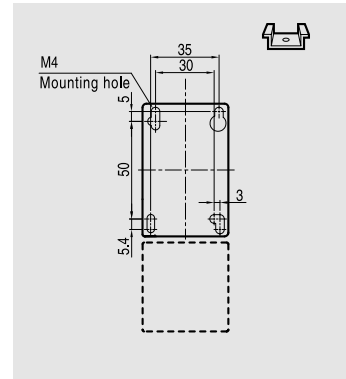
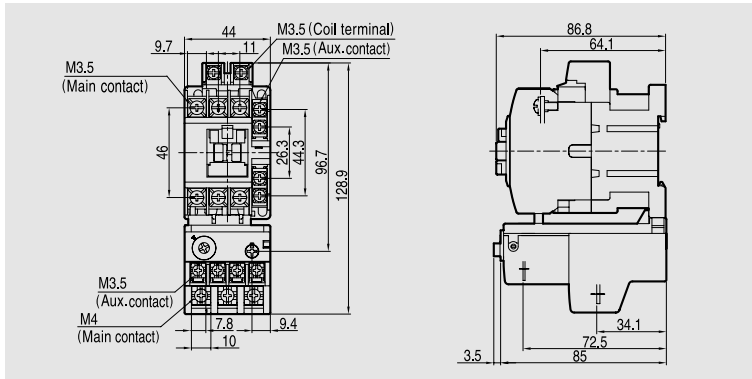


0.39kg

Motor starters, open

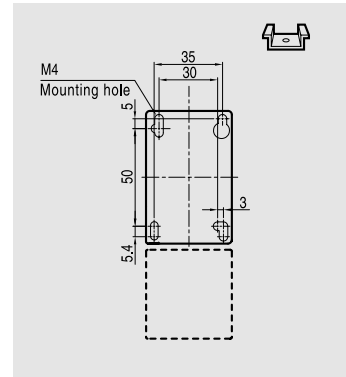
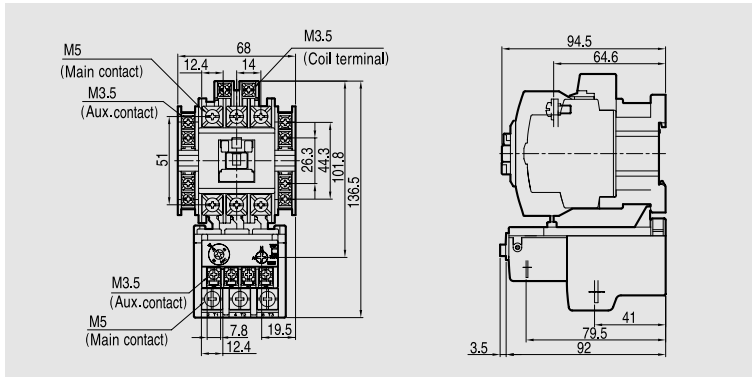


- GMS-9/K
- GMS-12/K
- GMS-18/K
- GMS-22/K



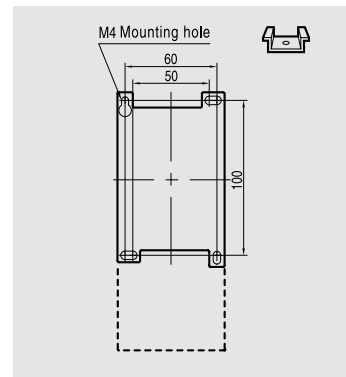
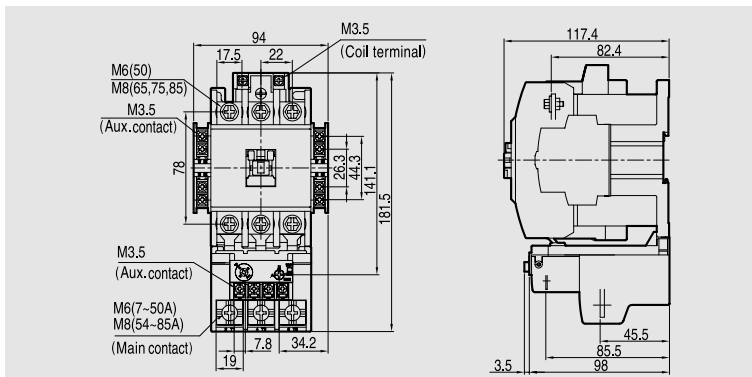
GMC-9, 12 + GTH(K) :0.46kg
GMC-18, 22 + GTH(K):0.5kg

- GMS-32/K
- GMS-40/K



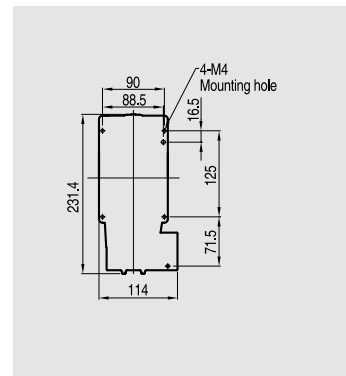
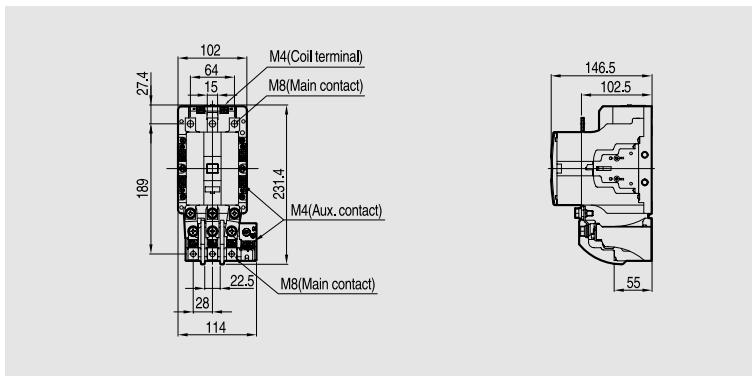
0.65kg

- GMS-50/K
- GMS-65/K
- GMS-75/K
- GMS-85/K



1.12kg

- GMS-100/K
- GMS-125/K

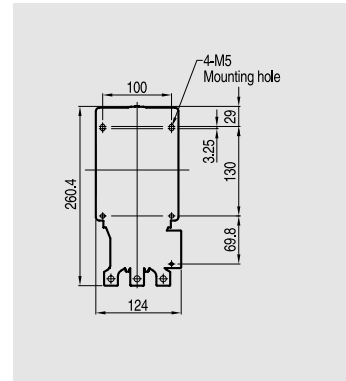
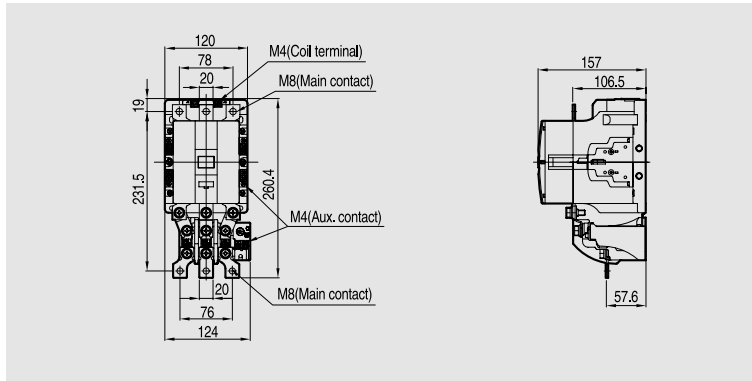


3.4kg

Dimensions

Motor starters, open

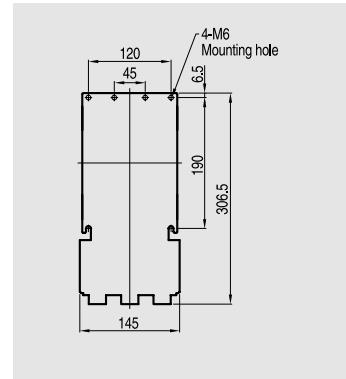
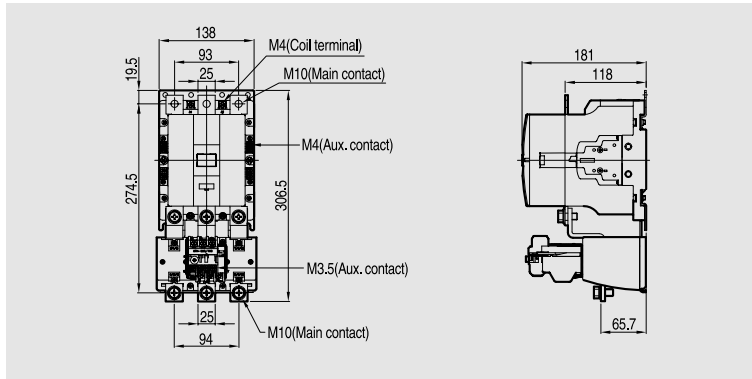
GMS-150/K



4kg

GMS-180/K

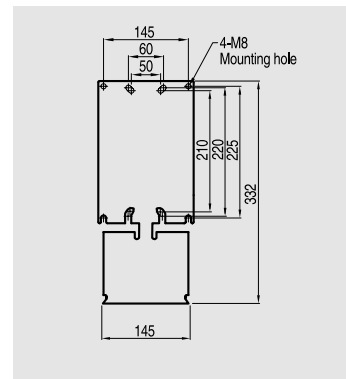
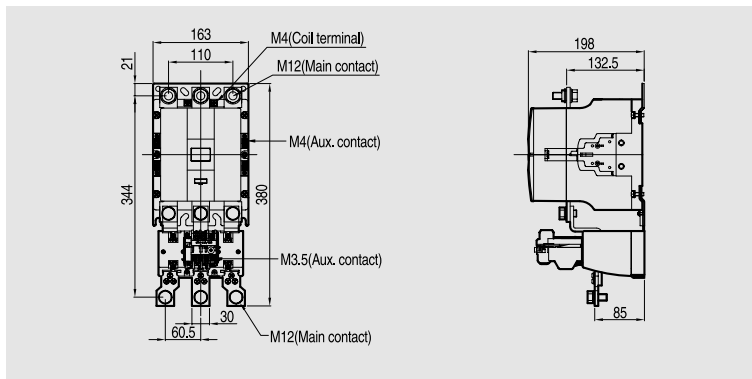
GMS-220/K



7.9kg

GMS-300/K

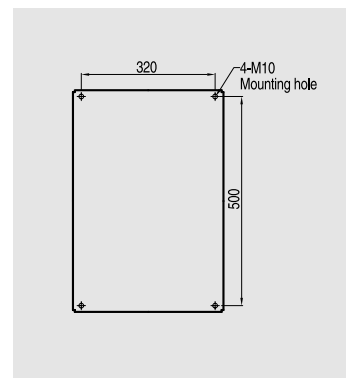
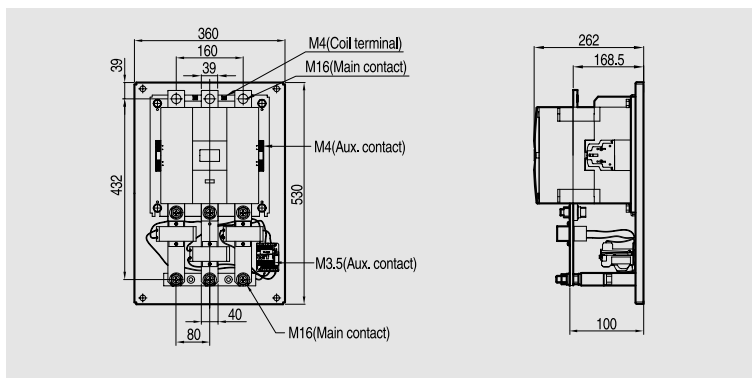
GMS-400/K



11.8kg

GMS-600/K

GMS-800/K



28kg