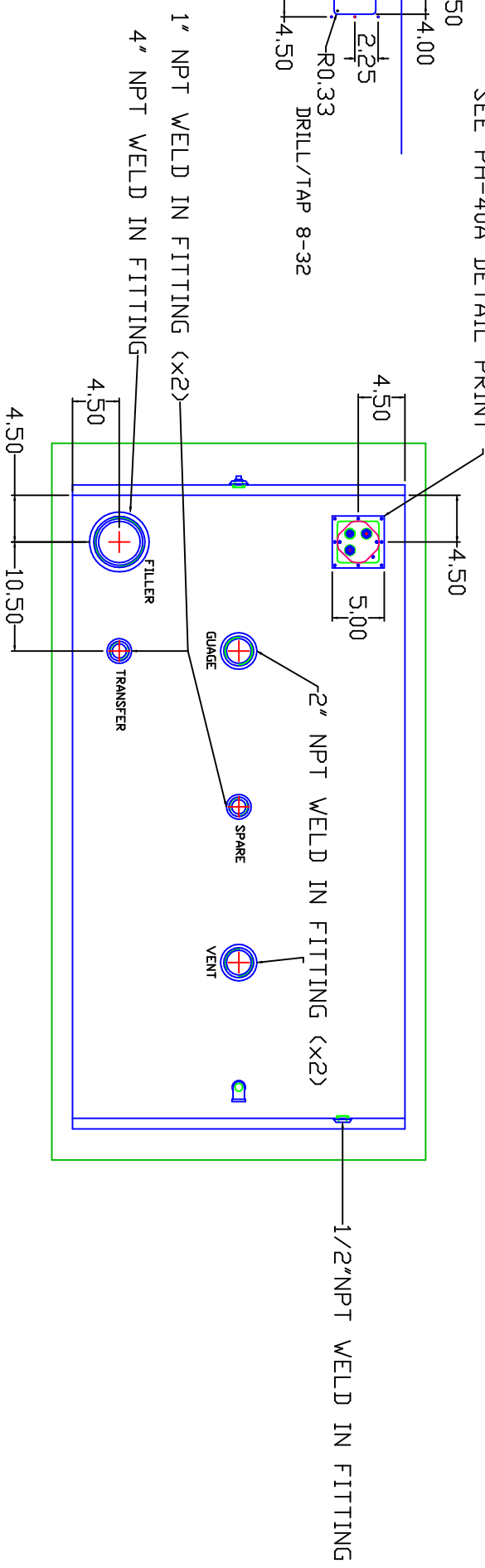
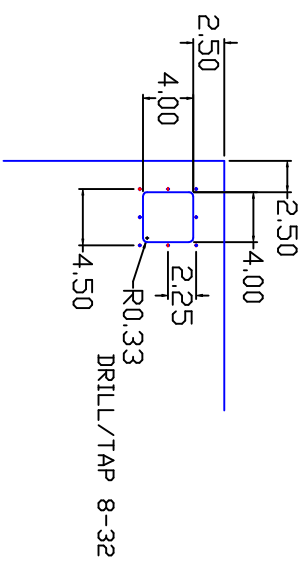
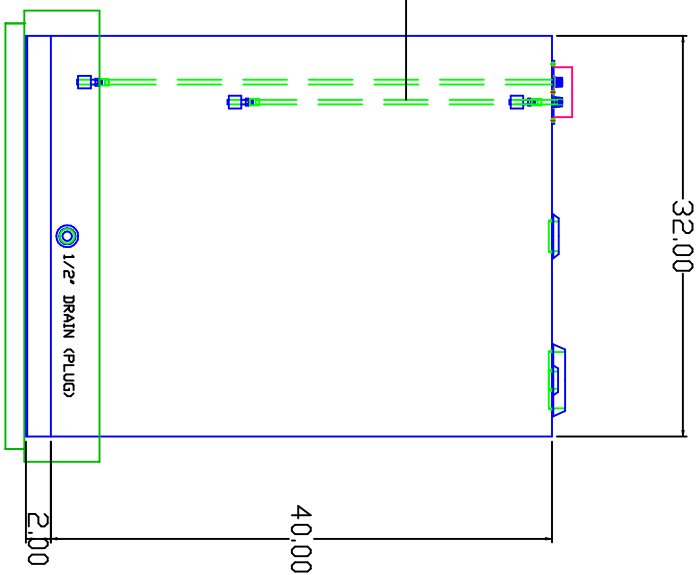


SEE PH-40A DETAIL PRINT

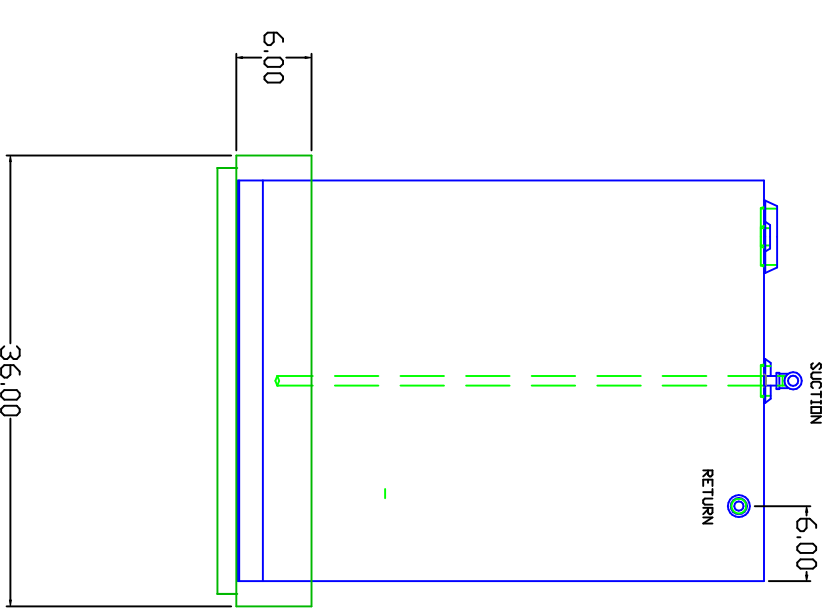
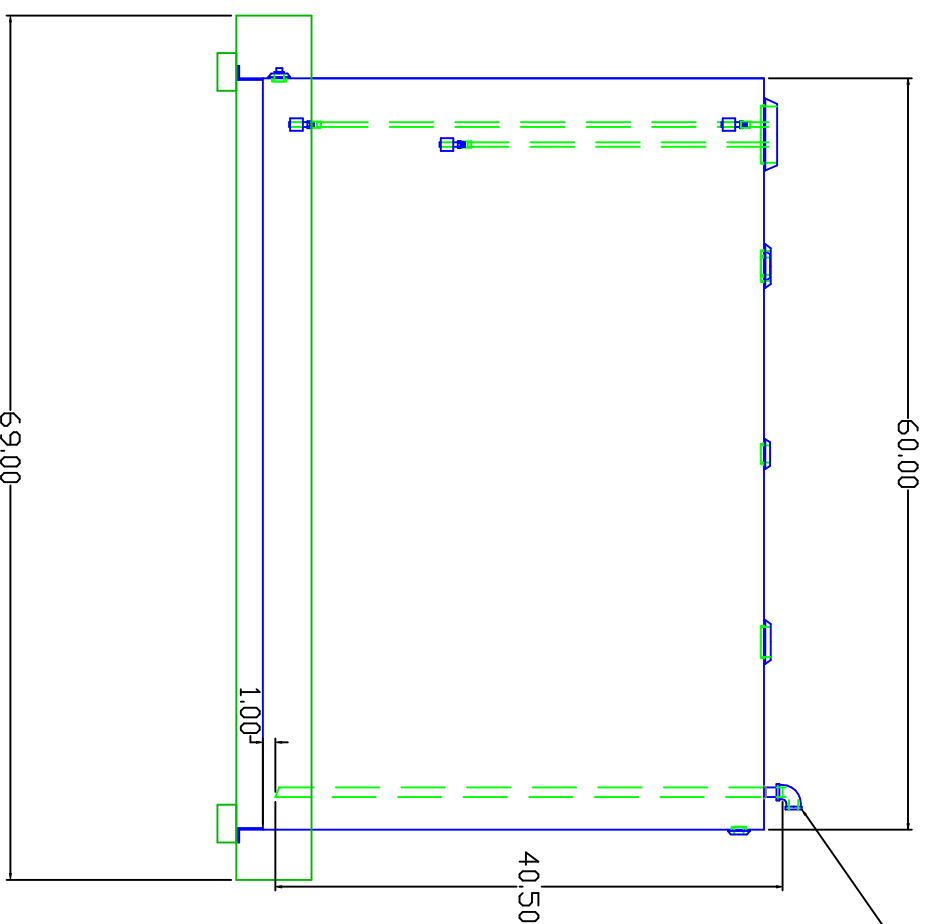


1/2" NPT DIP TUBE AND ELBOW  
WELDED SOLID INTO TANK  
CUT BOTTOM AT 30° ANGLE

SEE PH40B



PARTS LIST (McMaster-Carr):  
4" LOCKABLE FILLER VENT: 4906K29  
2" NPT VENT: 4906K11  
FLODAT GAUGE: 3711K2-40"



TANK AND PAN FROM 12g STEEL  
PAINT EXTERIOR

REVISIONS

| NUMBER | DESCRIPTION | DATE | APPROVED |
|--------|-------------|------|----------|
|        |             |      |          |
|        |             |      |          |
|        |             |      |          |
|        |             |      |          |

WORK ORDER NO.

METATEK

DESCRIPTION

DAY FUEL TANK

|                    |       |          |         |     |
|--------------------|-------|----------|---------|-----|
| FOR:               | SIZE  | FSCM NO. | DWG NO. | REV |
| BY: MWM Industries |       |          | F 40    |     |
| SCALE:             | DATE: | 12-20-11 | SHEET   |     |